

AVK METAL SEATED GATE VALVE

37/46
002

Flanged gate valves, designed according to EN1074 part 1 & 2, Face to face according to EN 558 table 2 basic series 3.
Standard flange drilling to EN1092-2 (ISO 7005-2)

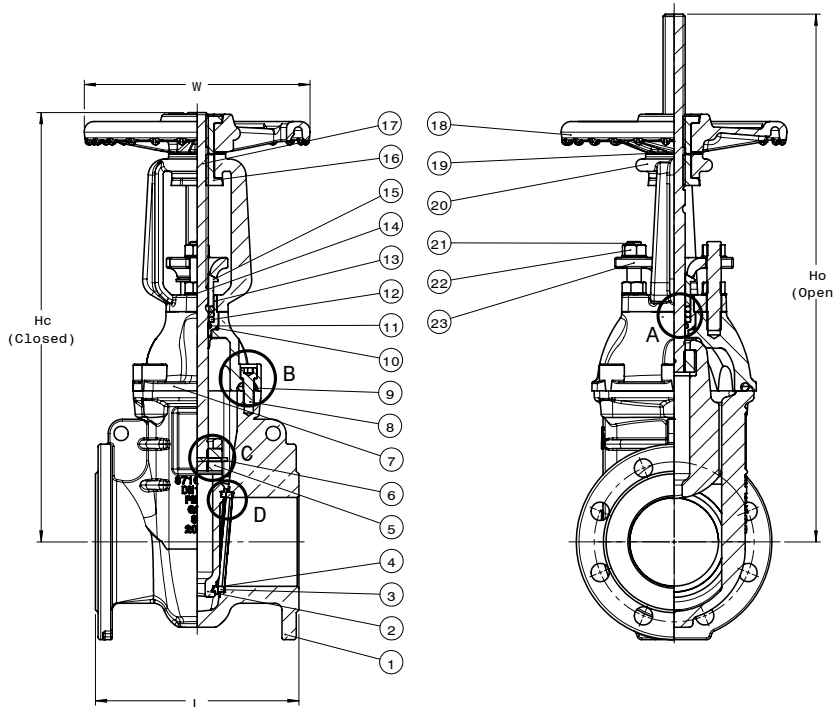
Use: For water, sewage and neutral liquids to max. 70°C
Hydraulic tests: Seat: 1.1 x PN Body: 17 bar (PN 10), 25 bar (PN 16)
Applicable Standards: To EN 1074 Part 1 & 2 : 2000
Flange drilling to EN 1092-2: PN 10 or PN 16

Materials:

Body	Ductile Iron EN 1563 EN-GJS-500/7
Bonnet	Ductile Iron EN 1563 EN-GJS-500/7
Wedge	Ductile Iron EN 1563 EN-GJS-500/7
Seats/Faces	Gunmetal EN 1982 CC491K(LG2)
Wedge Nut	Aluminium bronze EN 1982 CC331G(AB1)
Stem	Stainless Steel EN 10088 No 1.4057/A276-431
Bushing	Nylon
O-rings	EPDM
Gasket	EPDM
Coating	Internal and external blue fusion bonded epoxy(300 microns)WRAS



For further details see section "Technical Information".
The designs, materials and specifications shown are subject to change without notice due to the continuous development of our product programme.



A. Stem sealing

O-ring stem sealing comprising of 4 O-rings to ensure optimum sealing through stem.

B. Body/bonnet connection

The unique assembly of the valve body and bonnet ensures a durable tightness: A round rubber bonnet gasket fits into a recess in the valve bonnet preventing it from being blown out by pressure surges.

C. Wedge nut

The wedge nut is made of dezincification resistant brass with lubricating abilities providing optimum compatibility with the stainless steel stem. The wedge nut is secured by means of stainless steel pin to the rising stem.

D. Wedge

The wedge is made from ductile iron with bronze face rings which are machined to a fine surface finish to ensure optimum contact seal with body seat rings. The wedge face rings are accurately machined and firmly secured to the wedge. The guides in the wedge ensure uniform closure regardless of high pressures. The wedge has a large through bore housing for the stem that ensures no stagnant water or impurities can collect. The wedge is fully protected by a coating of fusion bonded epoxy.

Component list

1. Body
2. Wedge
3. Seat Facing Ring
4. Seat Ring
5. Wedge Nut
6. Pin
7. Bonnet
8. Bolt
9. Bonnet Gasket
10. O-ring
11. O-ring
12. Stem Seal
13. Bushing
14. Washer
15. Gland
16. Stem Nut
17. Stem
18. Handwheel
19. Washer
20. Yoke
21. Stud bolt
22. Nut
23. Gland follower

Reference nos. and dimensions

AVK ref. nos.	DN mm	PN drilling	W mm	L mm	Hc mm	Ho mm	Theoretical weight kg
37-050-46-61013110	50	16	180	178	370	457	29
37-080-46-61013110	80	16	180	203	415	528	34
37-100-46-61013110	100	16	254	229	481	620	41
37-150-46-61013110	150	16	305	267	632	813	69
37-200-46-61013110	200	16	356	292	792	1025	111
37-250-46-61013110	250	16	432	330	936	1218	171
37-300-46-61013110	300	16	432	356	1064	1398	252