

S-Line Fittings

S-LINE FITTINGS all acc. to 3A



Selection of the seals, please refer to the characteristics of the seals material.

EACH FITTINGS PACKAGING HAS A BARCODE

Catalog

Table of Contents page 9—24



S-Line Fittings

Product Description & Specification...6

Elbows

| | | |
|------|------|----|
| 2CMP | 5009 | 10 |
| 2KMP | 5010 | 10 |
| U2MP | 5024 | 16 |
| L2CM | 5039 | 22 |
| L2KM | 5040 | 22 |

Tees

| | | |
|-------|------|----|
| 7MP | 5011 | 10 |
| 7RMP | 5025 | 16 |
| 7MPS | 5026 | 17 |
| 7WWM | 5027 | 17 |
| 28AMP | 5035 | 20 |
| 28WBP | 5036 | 21 |

Crosses

| | | |
|-----|------|----|
| 9MP | 5012 | 11 |
|-----|------|----|

Reducers

| | | |
|---------|------|----|
| 31-14MP | 5013 | 11 |
| 32-14MP | 5014 | 12 |

Clamps

| | | |
|------------------|------|----|
| 13MHHM | 5017 | 13 |
| 13MHM | 5018 | 13 |
| 13MHHS/A13MHHS | 5019 | 14 |
| 13MHHS 3-Segment | 5022 | 14 |
| 13MHP | 5021 | 14 |

Gaskets

| | | |
|------|------|----|
| 40MP | 5022 | 15 |
|------|------|----|

Solid End Caps

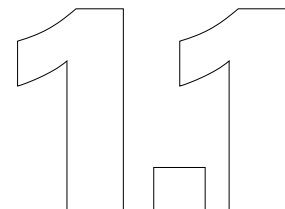
| | | |
|-------|------|----|
| 16AMP | 5023 | 15 |
|-------|------|----|

Ferrule

| | | |
|----------------|------|----|
| L14AM7 | 5015 | 15 |
| 14WMP | 5016 | 15 |
| 14MPHT | 5029 | 18 |
| 14MPW | 5030 | 18 |
| 14MPHR | 5028 | 17 |
| 14RMP | 5031 | 18 |
| 14WLMP | 5032 | 19 |
| 31WMP | 5037 | 21 |
| TL14AM7 | 5042 | 23 |
| 23BMP | 5041 | 23 |
| Spool Assembly | 5043 | 24 |
| 14MPHR | 5044 | 24 |

Adapters

| | | |
|----------------|------|----|
| 21MP | 5033 | 19 |
| 22MP | 5034 | 20 |
| Flange Adapter | 5038 | 22 |



S-Line Fittings

1.1

The easiness that S-line fittings present as far as assembly and dismantling of process lines and equipment are concerned can not be matched.

Gaskets for S-line Fittings are available in several different materials, EPDM, Silicone, FPM, and PTFE.



GEMO S-line Fittings meet



requirements.

S-LINE FITTINGS

SPECIFICATIONS....

Size Range: 1/2"OD through 12" OD
Materials: T304, T316L
Surface Finish:
Mechanically Polished
Internal 20Ra (0.51µm), External 32Ra (0.8µm)
No. 7 - ID & OD
No. 5 - OD only
No. 3 - ID only
No. 1 - unpolished
Custom - built upon request

ORDERING

SPECIFICATIONS....

- Specify:
- Description
 - Code No.
 - Size
 - Material
 - Surface Polish Requirements
 - Quantity

Example

| Description | Code No | Size | Material | Surface | Quantity |
|-------------|---------|------|----------|---------|----------|
| 2CMP 90° | 5009 | 2" | T316L | NO.7 | 500 |

NOTES THE DIMENSION TABLES

- All Dimensions are in inch and mm.
- Wall Thickness: Fittings 1.0"-3.0" sizes are manufactured with 16 gauge (0.065") wall thickness. The 4.0" tube size is manufactured with 14 gauge (0.083") wall thickness.

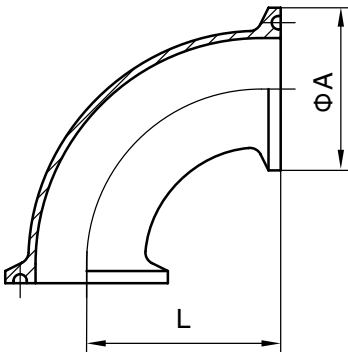
S-Line Fittings

Part for ASTM A270 tubes

Finish: OD: Semi bright. ID: Mirror
Connections: Welding ends



2CMP
90 Degree Clamp Elbow

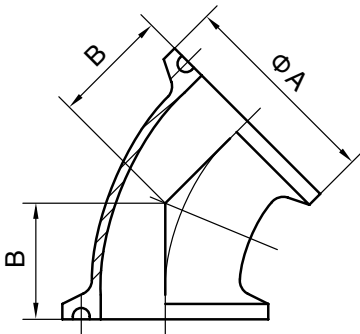


Basic Ordering Number: 5009

| NO. | Size | A | | L | |
|-----------|------|------|-------|------|--------|
| | | inch | mm | inch | mm |
| 5009 0100 | 1.0" | 1.99 | 50.5 | 2.00 | 50.8 |
| 5009 0150 | 1.5" | 1.99 | 50.5 | 2.75 | 69.9 |
| 5009 0200 | 2.0" | 2.52 | 64.0 | 3.50 | 88.9 |
| 5009 0250 | 2.5" | 3.05 | 77.5 | 4.25 | 107.95 |
| 5009 0300 | 3.0" | 3.58 | 91.0 | 5.00 | 127.0 |
| 5009 0400 | 4.0" | 4.69 | 119.0 | 6.62 | 168.2 |

**T304 and T316L are available.

2KMP
45 Degree Clamp Elbow

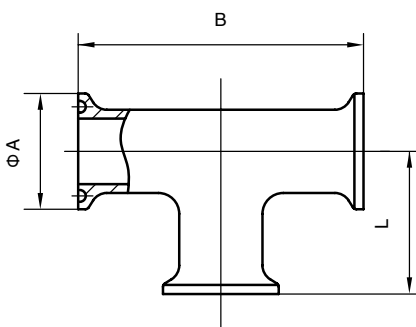


Basic Ordering Number: 5010

| NO. | Size | A | | B | |
|-----------|------|------|-------|------|-------|
| | | inch | mm | inch | mm |
| 5010 0100 | 1.0" | 1.99 | 50.5 | 1.12 | 28.5 |
| 5010 0150 | 1.5" | 1.99 | 50.5 | 1.44 | 36.5 |
| 5010 0200 | 2.0" | 2.52 | 64.0 | 1.75 | 44.45 |
| 5010 0250 | 2.5" | 3.05 | 77.5 | 2.06 | 52.3 |
| 5010 0300 | 3.0" | 3.58 | 91.0 | 2.37 | 60.3 |
| 5010 0400 | 4.0" | 4.69 | 119.0 | 3.12 | 79.4 |

**T304 and T316L are available.

7MP
Clamp Equal Tee



Basic Ordering Number: 5011

| NO. | Size | A | | B | | L | |
|-----------|------|------|-------|------|-------|------|-------|
| | | inch | mm | inch | mm | inch | mm |
| 5011 0100 | 1.0" | 1.99 | 50.5 | 4.75 | 120.6 | 2.37 | 60.3 |
| 5011 0150 | 1.5" | 1.99 | 50.5 | 5.50 | 139.8 | 2.75 | 69.9 |
| 5011 0200 | 2.0" | 2.52 | 64.0 | 7.00 | 177.8 | 3.50 | 88.9 |
| 5011 0250 | 2.5" | 3.05 | 77.5 | 7.00 | 177.8 | 3.50 | 88.9 |
| 5011 0300 | 3.0" | 3.58 | 91.0 | 7.50 | 190.6 | 3.75 | 95.3 |
| 5011 0400 | 4.0" | 4.69 | 119.0 | 8.99 | 228.4 | 4.50 | 114.2 |

**T304 and T316L are available.

NOTE! Treatment: Annealed.

**All measurements are in millimeters (mm)
Conversion to inches, 25.4mm=1inch

S-Line Fittings

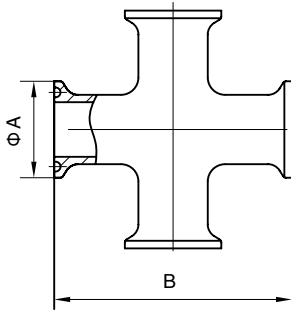
Part for ASTM A270 tubes

Finish: OD: Semi bright. ID: Mirror
Connections: Welding ends



1.1

9MP Clamp Equal Cross

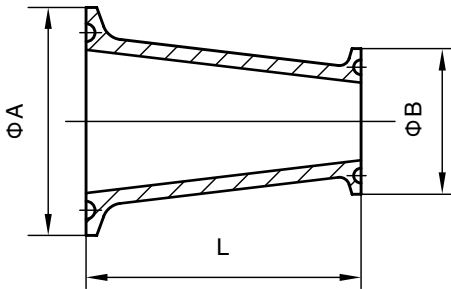


Basic Ordering Number: 5012

| NO. | Size | A | | B | |
|-----------|------|-------|-------|-------|-------|
| | | inch | mm | inch | mm |
| 5012 0100 | 1.0" | 1.988 | 50.5 | 4.748 | 120.6 |
| 5012 0150 | 1.5" | 1.988 | 50.5 | 5.504 | 139.8 |
| 5012 0200 | 2.0" | 2.520 | 64.0 | 7.000 | 177.8 |
| 5012 0250 | 2.5" | 3.051 | 77.5 | 7.000 | 177.8 |
| 5012 0300 | 3.0" | 3.583 | 91.0 | 7.504 | 190.6 |
| 5012 0400 | 4.0" | 4.685 | 119.0 | 8.992 | 228.4 |

**T304 and T316L are available.

31-14MP Concentric Reducer



Basic Ordering Number: 5013

| NO. | Size | A | | B | | L | |
|------------|-----------|-------|-------|-------|------|--------|-------|
| | | inch | mm | inch | mm | inch | mm |
| 5013 01510 | 1.5"×1.0" | 1.988 | 50.5 | 1.988 | 50.5 | 3.000 | 76.2 |
| 5013 02010 | 2.0"×1.0" | 2.520 | 64.0 | 1.988 | 50.5 | 5.000 | 127.0 |
| 5013 02015 | 2.0"×1.5" | 2.520 | 64.0 | 1.988 | 50.5 | 3.000 | 76.2 |
| 5013 02510 | 2.5"×1.0" | 3.051 | 77.5 | 1.988 | 50.5 | 7.000 | 177.8 |
| 5013 02515 | 2.5"×1.5" | 3.051 | 77.5 | 1.988 | 50.5 | 5.000 | 127.0 |
| 5013 02520 | 2.5"×2.0" | 3.051 | 77.5 | 2.520 | 64.0 | 3.000 | 76.2 |
| 5013 03010 | 3.0"×1.0" | 3.583 | 91.0 | 1.988 | 50.5 | 11.122 | 282.5 |
| 5013 03015 | 3.0"×1.5" | 3.583 | 91.0 | 1.988 | 50.5 | 7.000 | 177.8 |
| 5013 03020 | 3.0"×2.0" | 3.583 | 91.0 | 2.520 | 64.0 | 5.000 | 127.0 |
| 5013 03025 | 3.0"×2.5" | 3.583 | 91.0 | 3.051 | 77.5 | 3.000 | 76.2 |
| 5013 04015 | 4.0"×1.5" | 4.685 | 119.0 | 1.988 | 50.5 | 11.122 | 282.5 |
| 5013 04020 | 4.0"×2.0" | 4.685 | 119.0 | 2.520 | 64.0 | 9.122 | 231.7 |
| 5013 04025 | 4.0"×2.5" | 4.685 | 119.0 | 3.051 | 77.5 | 7.122 | 180.9 |
| 5013 04030 | 4.0"×3.0" | 4.685 | 119.0 | 3.583 | 91.0 | 5.122 | 130.1 |

**T304 and T316L are available.

**All measurements are in millimeters (mm)
Conversion to inches, 25.4mm=1inch

S-Line Fittings

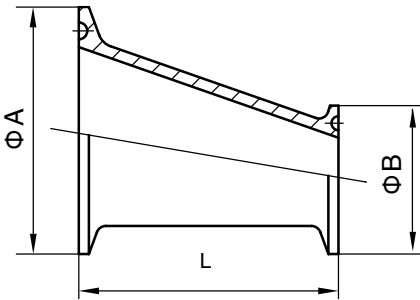
Part for ASTM A270 tubes



Finish: OD: Semi bright. ID: Mirror
Connections: Welding ends

1.1

32-14MP Eccentric Reducer

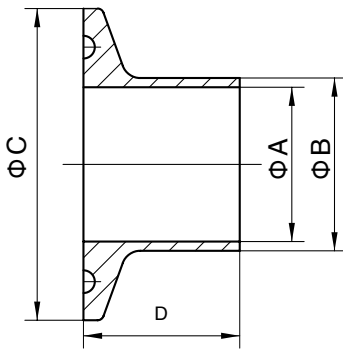


Basic Ordering Number: 5014

| NO. | Size | A | | B | | L | |
|------------|-----------|-------|-------|-------|------|--------|-------|
| | | inch | mm | inch | mm | inch | mm |
| 5014 01510 | 1.5"x1.0" | 1.988 | 50.5 | 1.988 | 50.5 | 3.000 | 76.2 |
| 5014 02010 | 2.0"x1.0" | 2.520 | 64.0 | 1.988 | 50.5 | 5.000 | 127.0 |
| 5014 02015 | 2.0"x1.5" | 2.520 | 64.0 | 1.988 | 50.5 | 3.000 | 76.2 |
| 5014 02510 | 2.5"x1.0" | 3.051 | 77.5 | 1.988 | 50.5 | 7.000 | 177.8 |
| 5014 02515 | 2.5"x1.5" | 3.051 | 77.5 | 1.988 | 50.5 | 5.000 | 127.0 |
| 5014 02520 | 2.5"x2.0" | 3.051 | 77.5 | 2.520 | 64.0 | 3.000 | 76.2 |
| 5014 03010 | 3.0"x1.0" | 3.583 | 91.0 | 1.988 | 50.5 | 11.122 | 282.5 |
| 5014 03015 | 3.0"x1.5" | 3.583 | 91.0 | 1.988 | 50.5 | 7.000 | 177.8 |
| 5014 03020 | 3.0"x2.0" | 3.583 | 91.0 | 2.520 | 64.0 | 5.000 | 127.0 |
| 5014 03025 | 3.0"x2.5" | 3.583 | 91.0 | 3.051 | 77.5 | 3.000 | 76.2 |
| 5014 04015 | 4.0"x1.5" | 4.685 | 119.0 | 1.988 | 50.5 | 11.122 | 282.5 |
| 5014 04020 | 4.0"x2.0" | 4.685 | 119.0 | 2.520 | 64.0 | 9.122 | 231.7 |
| 5014 04025 | 4.0"x2.5" | 4.685 | 119.0 | 3.051 | 77.5 | 7.122 | 180.9 |
| 5014 04030 | 4.0"x3.0" | 4.685 | 119.0 | 3.583 | 91.0 | 5.122 | 130.1 |

**T304 and T316L are available.

L14AM7 Long Weld Ferrule

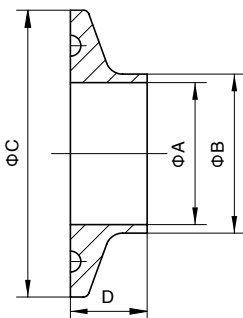


Basic Ordering Number: 5015

| NO. | Size | A | | B | | C | | D | |
|-----------|-------|--------|-------|--------|-------|--------|-------|-------|------|
| | | inch | mm | inch | mm | inch | mm | inch | mm |
| 5015 0050 | 0.5" | 0.370 | 9.4 | 0.500 | 12.7 | 0.992 | 25.2 | 1.126 | 28.6 |
| 5015 0075 | 0.75" | 0.620 | 15.7 | 0.750 | 19.05 | 0.992 | 25.2 | 1.126 | 28.6 |
| 5015 0100 | 1" | 0.874 | 22.2 | 1.000 | 25.4 | 1.988 | 50.5 | 1.126 | 28.6 |
| 5015 0150 | 1.5" | 1.370 | 34.8 | 1.500 | 38.1 | 1.988 | 50.5 | 1.126 | 28.6 |
| 5015 0200 | 2" | 1.870 | 47.5 | 2.000 | 50.8 | 2.520 | 64.0 | 1.126 | 28.6 |
| 5015 0250 | 2.5" | 2.370 | 60.2 | 2.500 | 63.5 | 3.051 | 77.5 | 1.126 | 28.6 |
| 5015 0300 | 3" | 2.870 | 72.9 | 3.000 | 76.2 | 3.583 | 91.0 | 1.126 | 28.6 |
| 5015 0400 | 4" | 3.834 | 97.4 | 4.000 | 101.6 | 4.685 | 119.0 | 1.126 | 28.6 |
| 5015 0600 | 6" | 5.782 | 146.9 | 6.000 | 152.4 | 6.567 | 166.8 | 1.500 | 38.1 |
| 5015 0800 | 8" | 3.845 | 97.7 | 8.000 | 203.2 | 8.571 | 217.7 | 1.500 | 38.1 |
| 5015 1000 | 10" | 9.732 | 247.2 | 10.000 | 254.0 | 10.571 | 268.5 | 1.500 | 38.1 |
| 5015 1200 | 12" | 11.732 | 298 | 12.000 | 304.8 | 12.571 | 319.3 | 1.750 | 44.4 |

**T304 and T316L are available.

14WMP Short Weld Ferrule



Basic Ordering Number: 5016

| NO. | Size | A | | B | | C | | D | |
|-----------|-------|-------|-------|-------|-------|-------|-------|-------|------|
| | | inch | mm | inch | mm | inch | mm | inch | mm |
| 5016 0050 | 0.5" | 0.370 | 9.4 | 0.500 | 12.7 | 0.992 | 25.2 | 0.500 | 12.7 |
| 5016 0075 | 0.75" | 0.620 | 15.75 | 0.750 | 19.05 | 0.992 | 25.2 | 0.500 | 12.7 |
| 5016 0100 | 1" | 0.874 | 22.2 | 1.000 | 25.4 | 1.988 | 50.5 | 0.500 | 12.7 |
| 5016 0150 | 1.5" | 1.370 | 34.8 | 1.500 | 38.1 | 1.988 | 50.5 | 0.500 | 12.7 |
| 5016 0200 | 2" | 1.870 | 47.5 | 2.000 | 50.8 | 2.520 | 64.0 | 0.500 | 12.7 |
| 5016 0250 | 2.5" | 2.370 | 60.2 | 2.500 | 63.5 | 3.051 | 77.5 | 0.500 | 12.7 |
| 5016 0300 | 3" | 2.870 | 72.9 | 3.000 | 76.2 | 3.583 | 91.0 | 0.500 | 12.7 |
| 5016 0400 | 4" | 3.834 | 97.38 | 4.000 | 101.6 | 4.685 | 119.0 | 0.625 | 15.8 |

**T304 and T316L are available.

NOTE! Treatment: Annealed.

**All measurements are in millimeters (mm)
Conversion to inches, 25.4mm=1inch

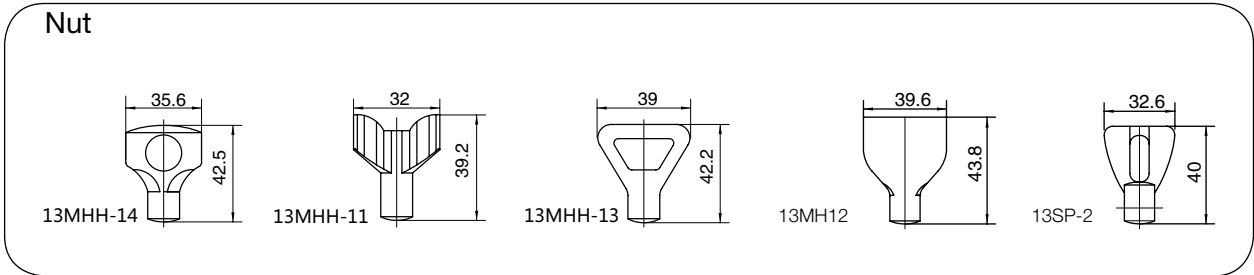
S-Line Fittings

Part for ASTM A270 tubes

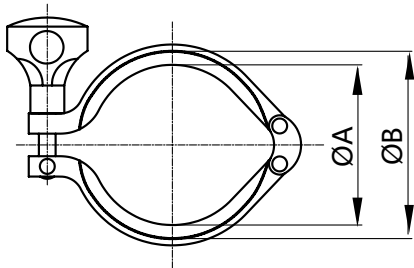
Finish: OD: Semi bright. ID: Mirror
Connections: Welding ends



1.1



13MHMM
Double Hinge Heavy Duty Clamp

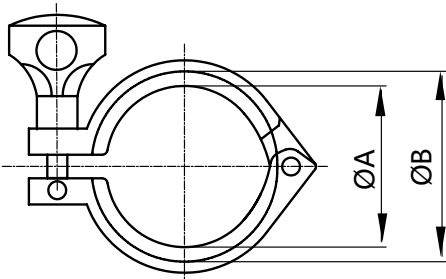


Basic Ordering Number: 5017

| NO. | Size | A | | B | |
|-----------|---------|-------|-------|-------|-------|
| | | inch | mm | inch | mm |
| 5017 1015 | 1"-1.5" | 1.748 | 44.4 | 2.122 | 53.6 |
| 5017 0200 | 2" | 2.276 | 57.8 | 2.654 | 67 |
| 5017 0250 | 2.5" | 2.811 | 71.4 | 3.185 | 80.6 |
| 5017 0300 | 3" | 3.307 | 84 | 3.717 | 94.2 |
| 5017 0350 | 3.5" | 3.898 | 99 | 4.299 | 109.2 |
| 5017 0400 | 4" | 4.331 | 110 | 4.820 | 122.2 |
| 5017 0450 | 4.5" | 4.843 | 123 | 5.244 | 133.2 |
| 5017 0600 | 6" | 6.118 | 155.4 | 6.695 | 170.4 |

**Only T304 is available.

13MHM
Single Hinge Heavy Duty Clamp



Basic Ordering Number: 5018

| NO. | Size | A | | B | |
|-----------|------------|--------|-------|--------|-------|
| | | inch | mm | inch | mm |
| 5018 5075 | 0.5"-0.75" | 0.787 | 20 | 1.062 | 28 |
| 5018 0150 | 1"-1.5" | 1.748 | 44.4 | 2.122 | 53.6 |
| 5018 0200 | 2" | 2.276 | 57.8 | 2.654 | 67 |
| 5018 0250 | 2.5" | 2.811 | 71.4 | 3.185 | 80.6 |
| 5018 0300 | 3" | 3.307 | 84 | 3.717 | 94.2 |
| 5018 0350 | 3.5" | 3.898 | 99 | 4.299 | 109.2 |
| 5018 0400 | 4" | 4.331 | 110 | 4.820 | 122.2 |
| 5018 0450 | 4.5" | 4.843 | 123 | 5.244 | 133.2 |
| 5018 0600 | 6" | 6.118 | 155.4 | 6.695 | 170.4 |
| 5018 0800 | 8" | 8.071 | 205 | 8.695 | 220 |
| 5018 1000 | 10" | 10.118 | 257 | 10.695 | 272 |
| 5018 1200 | 12" | 12.126 | 308 | 12.695 | 323 |

**Only T304 is available.

**All measurements are in millimeters (mm)
Conversion to inches, 25.4mm=1inch

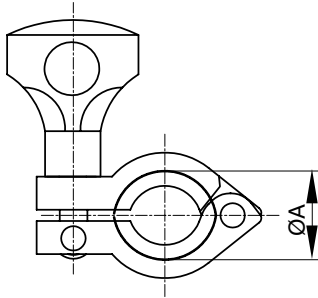
S-Line Fittings

Part for ASTM A270 tubes

Finish: OD: Semi bright. ID: Mirror
Connections: Welding ends



13MHHS / A13MHHS** Fractional Clamp

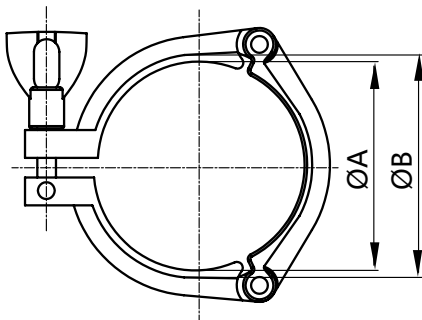


Basic Ordering Number: 5019

| NO. | Size | | A | |
|-----------|------|------|------|------|
| | in | mm | in | mm |
| 5019 0075 | 0.75 | 19.0 | 1.13 | 28.6 |

**Only 1.4301 is available.

13MHHS 3-Segment Heavy Duty Clamp

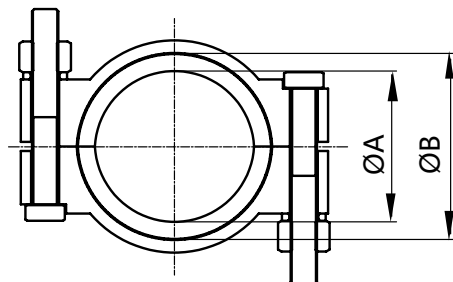


Basic Ordering Number: 5020

| NO. | Size | A | | B | |
|-----------|---------|-------|-------|-------|-------|
| | | inch | mm | inch | mm |
| 5020 1015 | 1"-1.5" | 1.748 | 44.4 | 2.122 | 53.6 |
| 5020 0200 | 2" | 2.276 | 57.8 | 2.654 | 67 |
| 5020 0250 | 2.5" | 2.811 | 71.4 | 3.185 | 80.6 |
| 5020 0300 | 3" | 3.307 | 84 | 3.717 | 94.2 |
| 5020 0350 | 3.5" | 3.898 | 99 | 4.299 | 109.2 |
| 5020 0400 | 4" | 4.331 | 110 | 4.820 | 122.2 |
| 5020 0450 | 4.5" | 4.843 | 123 | 5.244 | 133.2 |
| 5020 0600 | 6" | 6.118 | 155.4 | 6.695 | 170.4 |

**Only T304 is available.

13MHP High Pressure Clamp



Basic Ordering Number: 5021

| NO. | Size | A | | B | |
|-----------|---------|-------|-------|-------|-------|
| | | inch | mm | inch | mm |
| 5021 1015 | 1"-1.5" | 1.748 | 44.4 | 2.046 | 53.6 |
| 5021 0200 | 2" | 2.276 | 57.8 | 2.578 | 67 |
| 5021 0250 | 2.5" | 2.811 | 71.4 | 3.110 | 80.6 |
| 5021 0300 | 3" | 3.307 | 84 | 3.640 | 94.2 |
| 5021 0350 | 3.5" | 3.898 | 99 | 4.299 | 109.2 |
| 5021 0400 | 4" | 4.331 | 110 | 4.744 | 122.2 |
| 5021 0450 | 4.5" | 4.843 | 123 | 5.244 | 133.2 |
| 5021 0600 | 6" | 6.118 | 155.4 | 6.632 | 170.4 |

**Only T304 is available.

NOTE! Treatment: Annealed.

**All measurements are in millimeters (mm)
Conversion to inches, 25.4mm=1inch

S-Line Fittings

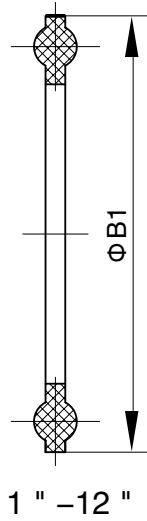
Part for ASTM A270 tubes

Finish: OD: Semi bright. ID: Mirror
Connections: Welding ends



1.1

40MP Gasket

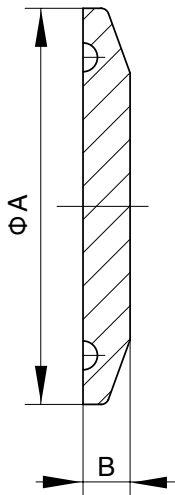


Basic Ordering Number: 5022

| NO. | Size | B1 | |
|-----------|------------|--------|-------|
| | | inch | mm |
| 5022 5075 | 0.5"-0.75" | 0.858 | 21.8 |
| 5022 1050 | 1"-1.5" | 1.988 | 50.5 |
| 5022 0200 | 2" | 2.520 | 64 |
| 5022 0250 | 2.5" | 3.051 | 77.5 |
| 5022 0300 | 3" | 3.583 | 91 |
| 5022 0400 | 4" | 4.685 | 119 |
| 5022 0450 | 4.5" | 5.118 | 130 |
| 5022 0600 | 6" | 6.567 | 166.8 |
| 5022 0800 | 8" | 8.571 | 217.7 |
| 5022 1000 | 10" | 10.571 | 268.5 |
| 5022 1200 | 12" | 12.571 | 319.3 |

**Silicone, EPDM, FPM and PTFE are available.

16AMP Solid End Cap



Basic Ordering Number: 5023

| NO. | Size | A | | B | |
|-----------|------------|--------|-------|-------|------|
| | | inch | mm | inch | mm |
| 5023 5075 | 0.5"-0.75" | 0.992 | 25.2 | 0.252 | 6.4 |
| | | 1.339 | 34 | 0.252 | 6.4 |
| 5023 1050 | 1"-1.5" | 1.988 | 50.5 | 0.252 | 6.4 |
| 5023 0200 | 2" | 2.520 | 64.0 | 0.252 | 6.4 |
| 5023 0250 | 2.5" | 3.051 | 77.5 | 0.252 | 6.4 |
| 5023 0300 | 3" | 3.583 | 91.0 | 0.252 | 6.4 |
| 5023 0400 | 4" | 4.685 | 119.0 | 0.311 | 7.9 |
| 5023 0600 | 6" | 6.567 | 166.8 | 0.437 | 11.1 |
| 5023 0800 | 8" | 8.571 | 217.7 | 0.437 | 11.1 |
| 5023 1000 | 10" | 10.571 | 268.5 | 0.437 | 11.1 |
| 5023 1200 | 12" | 12.571 | 319.3 | 0.437 | 11.1 |

**T304 and T316L are available.

**All measurements are in millimeters (mm)
Conversion to inches, 25.4mm=1inch

S-Line Fittings

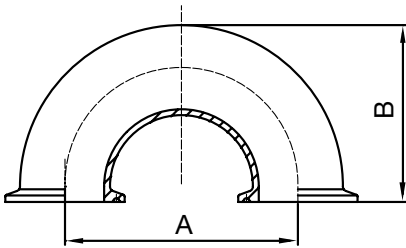
Part for ASTM A270 tubes

Finish: OD: Semi bright. ID: Mirror
Connections: Welding ends



2UMP
Clamp 180 Degree Return Bend

Basic Ordering Number: 5024

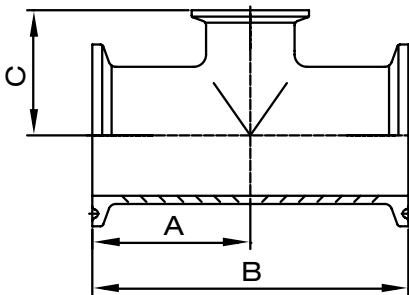


| NO. | Size | A | | B | |
|-----------|------|------|-------|-------|-------|
| | | inch | mm | inch | mm |
| 5024 0100 | 1" | 3 | 76.2 | 2.5 | 63.5 |
| 5024 0150 | 1.5" | 4.5 | 114.3 | 3.5 | 88.9 |
| 5024 0200 | 2" | 6 | 152.4 | 4.5 | 114.3 |
| 5024 0250 | 2.5" | 7.5 | 190.5 | 5.5 | 139.7 |
| 5024 0300 | 3" | 9 | 228.6 | 6.5 | 165.1 |
| 5024 0400 | 4" | 12 | 304.8 | 8.625 | 219.1 |

**T304 and T316L are available.

7RMP
Clamp End Reducing Tee

Basic Ordering Number: 5025



| NO. | Size | A | | B | | C | |
|-----------|-----------|-------|-------|-------|-------|-------|------|
| | | inch | mm | inch | mm | inch | mm |
| 5025 1510 | 1.5"x1" | 2.156 | 54.8 | 4.312 | 109.5 | 1.875 | 47.6 |
| 5025 2010 | 2"x1" | 2.562 | 65.1 | 5.125 | 130.2 | 2.125 | 54.0 |
| 5025 2015 | 2"x1.5" | 2.562 | 65.1 | 5.125 | 130.2 | 2.406 | 61.1 |
| 5025 2515 | 2.5"x1.5" | 2.844 | 72.2 | 5.688 | 144.5 | 2.656 | 67.5 |
| 5025 2520 | 2.5"x2" | 2.844 | 72.2 | 5.688 | 144.5 | 2.812 | 71.4 |
| 5025 3015 | 3"x1.5" | 3.093 | 78.6 | 6.188 | 157.2 | 2.906 | 73.8 |
| 5025 3020 | 3"x2" | 3.093 | 78.6 | 6.188 | 157.2 | 3.063 | 77.8 |
| 5025 3025 | 3"x2.5" | 3.093 | 78.6 | 6.188 | 157.2 | 3.093 | 78.6 |
| 5025 4015 | 4"x1.5" | 4.063 | 103.2 | 8.125 | 206.4 | 3.406 | 86.5 |
| 5025 4020 | 4"x2" | 4.063 | 103.2 | 8.125 | 206.4 | 3.563 | 90.5 |
| 5025 4025 | 4"x2.5" | 4.063 | 103.2 | 8.125 | 206.4 | 3.594 | 91.3 |
| 5025 4030 | 4"x3" | 4.063 | 103.2 | 8.125 | 206.4 | 3.594 | 91.3 |

**T304 and T316L are available.

NOTE! Treatment: Annealed.

**All measurements are in millimeters (mm)
Conversion to inches, 25.4mm=1inch

S-Line Fittings

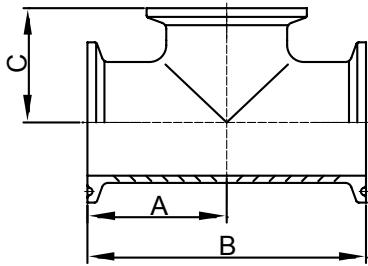
Part for ASTM A270 tubes

Finish: OD: Semi bright. ID: Mirror
Connections: Welding ends



1.1

7MPS
Clamp End Short Outlet Tee

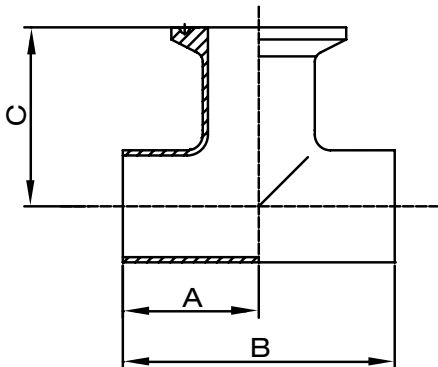


Basic Ordering Number: 5026

| NO. | Size | A | | B | | C | |
|-----------|------|-------|-------|------|-------|-------|------|
| | | inch | mm | inch | mm | inch | mm |
| 5026 0100 | 1" | 2.375 | 60.3 | 4.75 | 120.6 | 1.125 | 28.6 |
| 5026 0150 | 1.5" | 2.75 | 69.8 | 5.5 | 139.7 | 1.375 | 34.9 |
| 5026 0200 | 2" | 3.5 | 88.9 | 7 | 177.8 | 1.625 | 41.3 |
| 5026 0250 | 2.5" | 3.5 | 88.9 | 7 | 177.8 | 1.875 | 47.6 |
| 5026 0300 | 3" | 3.75 | 95.2 | 7.5 | 190.5 | 2.125 | 54.0 |
| 5026 0400 | 4" | 4.5 | 114.3 | 9 | 228.6 | 2.75 | 69.9 |

**T304 and T316L are available.

7WWM
Weld X Weld X Clamp Outlet Tee

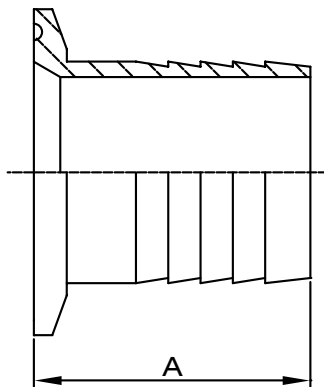


Basic Ordering Number: 5027

| NO. | Size | A | | B | | C | |
|-----------|------|-------|------|-------|-------|-------|-------|
| | | inch | mm | inch | mm | inch | mm |
| 5027 0100 | 1" | 1.125 | 28.6 | 2.25 | 57.1 | 1.625 | 41.3 |
| 5027 0150 | 1.5" | 1.656 | 42.1 | 3.312 | 84.1 | 2.156 | 54.8 |
| 5027 0200 | 2" | 2.063 | 52.4 | 4.125 | 104.8 | 2.563 | 65.1 |
| 5027 0250 | 2.5" | 2.344 | 59.5 | 4.688 | 119.1 | 2.844 | 72.2 |
| 5027 0300 | 3" | 2.594 | 65.9 | 5.188 | 131.8 | 3.094 | 78.6 |
| 5027 0400 | 4" | 3.438 | 87.3 | 6.875 | 174.6 | 4.063 | 103.2 |

**T304 and T316L are available.

14MPHR
Rubber Hose Adapter



Basic Ordering Number: 5028

| NO. | Size | A | |
|-----------|------|-------|------|
| | | inch | mm |
| 5028 0100 | 1" | 1.687 | 42.8 |
| 5028 0150 | 1.5" | 1.687 | 42.8 |
| 5028 0200 | 2" | 2.312 | 58.7 |
| 5028 0250 | 2.5" | 2.343 | 59.5 |
| 5028 0300 | 3" | 3.093 | 78.5 |
| 5028 0400 | 4" | 3.406 | 86.5 |
| 5028 0600 | 6" | 3.406 | 86.5 |
| 5028 0800 | 8" | 3.406 | 86.5 |

**T304 and T316L are available.

**All measurements are in millimeters (mm)
Conversion to inches, 25.4mm=1inch

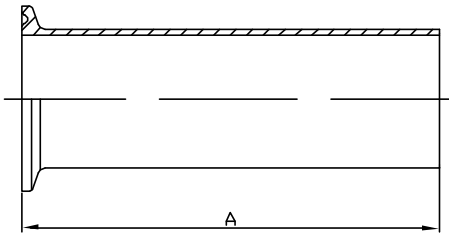
S-Line Fittings

Part for ASTM A270 tubes

Finish: OD: Semi bright. ID: Mirror
Connections: Welding ends



14MPHT Tygon Hose Adapter

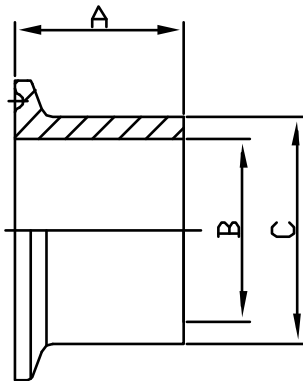


Basic Ordering Number: 5029

| NO. | Size | A | |
|-----------|------|-------|-------|
| | | inch | mm |
| 5029 0100 | 1" | 4.5 | 114.3 |
| 5029 0150 | 1.5" | 4.5 | 114.3 |
| 5029 0200 | 2" | 4.5 | 114.3 |
| 5029 0250 | 2.5" | 4.5 | 114.3 |
| 5029 0300 | 3" | 4.5 | 114.3 |
| 5029 0400 | 4" | 4.625 | 117.5 |

**T304 and T316L are available.

14MPW Heavy Wall Tank Weld Ferrule (Spud)

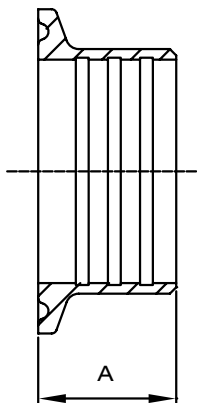


Basic Ordering Number: 5030

| NO. | Size | A | | B | | C | |
|-----------|-------|-------|------|-------|-------|-------|-------|
| | | inch | mm | inch | mm | inch | mm |
| 5030 0050 | 0.5" | 1.625 | 41.3 | 0.321 | 8.1 | 0.502 | 12.7 |
| 5030 0075 | 0.75" | 1.625 | 41.3 | 0.574 | 14.6 | 0.75 | 19.0 |
| 5030 0100 | 1" | 1.625 | 41.3 | 0.87 | 22.1 | 1.16 | 29.4 |
| 5030 0150 | 1.5" | 1.625 | 41.3 | 1.37 | 34.8 | 1.676 | 42.6 |
| 5030 0200 | 2" | 1.75 | 44.4 | 1.87 | 47.5 | 2.192 | 55.7 |
| 5030 0250 | 2.5" | 1.75 | 44.4 | 2.37 | 60.2 | 2.708 | 68.8 |
| 5030 0300 | 3" | 1.813 | 46.0 | 2.87 | 72.9 | 3.224 | 81.9 |
| 5030 0400 | 4" | 2.125 | 54.0 | 3.834 | 97.4 | 4.256 | 108.1 |
| 5030 0600 | 6" | 2.5 | 63.5 | 5.758 | 146.2 | 6.192 | 157.3 |
| 5030 0800 | 8" | 2.5 | 63.5 | 7.758 | 197.0 | 8.192 | 208.1 |

**T304 and T316L are available.

14RMP Roll-On Ferrule (expanding)



Basic Ordering Number: 5031

| NO. | Size | A | |
|-----------|------|-------|------|
| | | inch | mm |
| 5031 0100 | 1" | 0.75 | 19.0 |
| 5031 0150 | 1.5" | 1.125 | 28.6 |
| 5031 0200 | 2" | 1.313 | 33.4 |
| 5031 0250 | 2.5" | 1.375 | 34.9 |
| 5031 0300 | 3" | 1.438 | 36.5 |
| 5031 0400 | 4" | 1.5 | 38.1 |

**Only 1.4301 is available.

NOTE! Treatment: Annealed.

**All measurements are in millimeters (mm)
Conversion to inches, 25.4mm=1inch

S-Line Fittings

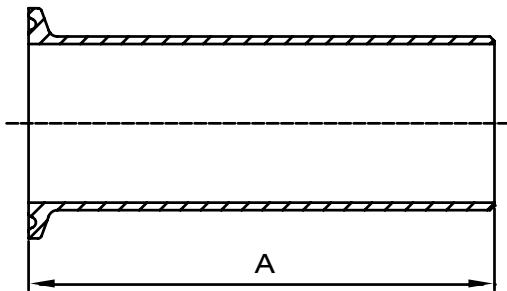
Part for ASTM A270 tubes

Finish: OD: Semi bright. ID: Mirror
Connections: Welding ends



1.1

14WLMP
Light Wall Tank Weld Ferrule

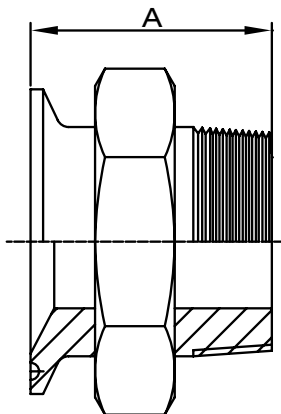


Basic Ordering Number: 5032

| NO. | Size | A | |
|-----------|-------|------|-------|
| | | inch | mm |
| 5032 0050 | 0.5" | 3 | 76.2 |
| 5032 0075 | 0.75" | 3 | 76.2 |
| 5032 0100 | 1" | 3 | 76.2 |
| 5032 0150 | 1.5" | 3 | 76.2 |
| 5032 0200 | 2" | 3 | 76.2 |
| 5032 0250 | 2.5" | 3 | 76.2 |
| 5032 0300 | 3" | 4 | 101.6 |
| 5032 0400 | 4" | 4 | 101.6 |
| 5032 0600 | 6" | 6 | 152.4 |
| 5032 0800 | 8" | 6 | 152.4 |
| 5032 1000 | 10" | 6 | 152.4 |
| 5032 1200 | 12" | 6 | 152.4 |

**T304 and T316L are available.

21MP
Clamp X Male NPT Adapter



Basic Ordering Number: 5033

| NO. | Size | A | |
|-----------|-------|-------|-------|
| | | inch | mm |
| 5033 0050 | 0.5" | 2 | 50.8 |
| 5033 0075 | 0.75" | 1.787 | 45.4 |
| 5033 0100 | 1" | 2.25 | 57.15 |
| 5033 0150 | 1.5" | 2.25 | 57.15 |
| 5033 0200 | 2" | 2.638 | 67.0 |
| 5033 0250 | 2.5" | 2.875 | 73.0 |
| 5033 0300 | 3" | 3.07 | 78.0 |
| 5033 0400 | 4" | 3.155 | 80.1 |

**T304 and T316L are available.

**All measurements are in millimeters (mm)
Conversion to inches, 25.4mm=1inch

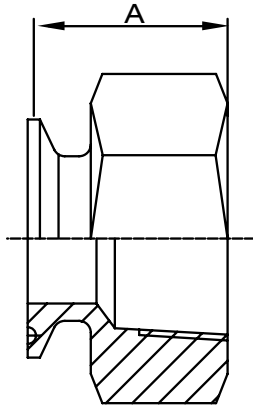
S-Line Fittings

Part for ASTM A270 tubes

Finish: OD: Semi bright. ID: Mirror
Connections: Welding ends



22MP Clamp X Female NPT Adapter

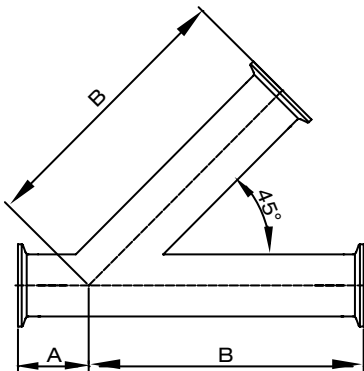


Basic Ordering Number: 5034

| NO. | Size | A | |
|-----------|-------|-------|------|
| | | inch | mm |
| 5034 0050 | 0.5" | 1.5 | 38.1 |
| 5034 0075 | 0.75" | 1.625 | 41.3 |
| 5034 0100 | 1" | 1.625 | 41.3 |
| 5034 0150 | 1.5" | 2.25 | 57.1 |
| 5034 0200 | 2" | 2.406 | 61.1 |
| 5034 0250 | 2.5" | 2.187 | 55.5 |
| 5034 0300 | 3" | 2.187 | 55.5 |
| 5034 0400 | 4" | 2.625 | 66.7 |

**T304 and T316L are available.

28AMP 45 Degree Clamp End Lateral WYE



Basic Ordering Number: 5035

| NO. | Size | A | | B | |
|-----------|-------|-------|-------|--------|-------|
| | | inch | mm | inch | mm |
| 5035 0050 | 0.5" | 1.5 | 38.1 | 5.5 | 139.7 |
| 5035 0075 | 0.75" | 1.5 | 38.1 | 5.5 | 139.7 |
| 5035 0100 | 1" | 1.5 | 38.1 | 5.5 | 139.7 |
| 5035 0150 | 1.5" | 1.687 | 42.8 | 6.688 | 169.9 |
| 5035 0200 | 2" | 2.125 | 54.0 | 7.625 | 193.7 |
| 5035 0250 | 2.5" | 2 | 50.8 | 9 | 228.6 |
| 5035 0300 | 3" | 2.375 | 60.3 | 9.375 | 238.1 |
| 5035 0400 | 4" | 2.687 | 68.2 | 11.375 | 288.9 |
| 5035 0600 | 6" | 4.375 | 111.1 | 13.25 | 336.5 |

**T304 and T316L are available.

NOTE! Treatment: Annealed.

**All measurements are in millimeters (mm)
Conversion to inches, 25.4mm=1inch

S-Line Fittings

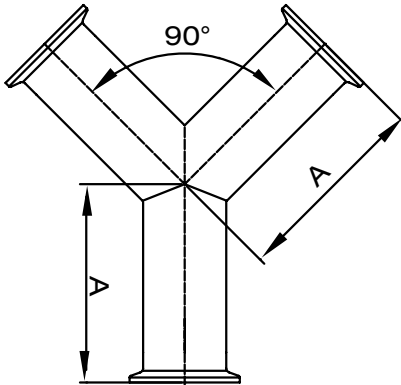
Part for ASTM A270 tubes

Finish: OD: Semi bright. ID: Mirror
Connections: Welding ends



1.1

28BMP
Clamp End True Y

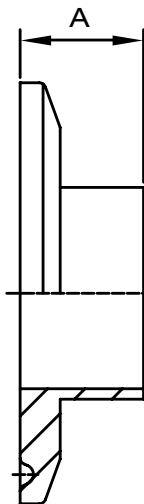


Basic Ordering Number: 5036

| NO. | Size | A | |
|-----------|-------|-------|-------|
| | | inch | mm |
| 5036 0050 | 0.5" | 2.5 | 63.5 |
| 5036 0075 | 0.75" | 2.5 | 63.5 |
| 5036 0100 | 1" | 3.5 | 88.9 |
| 5036 0150 | 1.5" | 3.5 | 88.9 |
| 5036 0200 | 2" | 4.5 | 114.3 |
| 5036 0250 | 2.5" | 5.5 | 139.7 |
| 5036 0300 | 3" | 6.5 | 165.1 |
| 5036 0400 | 4" | 8.625 | 219.1 |
| 5036 0600 | 6" | 8.75 | 222.2 |

**T304 and T316L are available.

31WMP
Reducing Ferrule



Basic Ordering Number: 5037

| NO. | Size | A | |
|-----------|------------|-------|------|
| | | inch | mm |
| 5037 0050 | 0.75"x0.5" | 0.5 | 12.7 |
| 5037 0075 | 1"x0.5" | 0.5 | 12.7 |
| 5037 0100 | 1"x0.75" | 0.5 | 12.7 |
| 5037 0150 | 1.5"x1" | 0.5 | 12.7 |
| 5037 0200 | 1.5"x0.5" | 0.5 | 12.7 |
| 5037 0250 | 1.5"x0.75" | 0.5 | 12.7 |
| 5037 0300 | 2"x1" | 0.5 | 12.7 |
| 5037 0400 | 2"x1.5" | 0.5 | 12.7 |
| 5037 0600 | 2.5"x2" | 0.5 | 12.7 |
| 5037 0400 | 3"x2" | 0.5 | 12.7 |
| 5037 0600 | 4"x3" | 0.625 | 15.9 |

**T304 and T316L are available.

**All measurements are in millimeters (mm)
Conversion to inches, 25.4mm=1inch

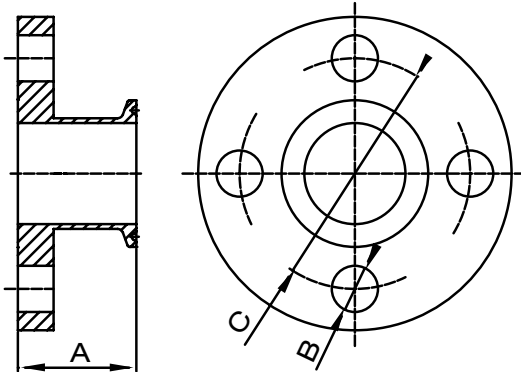
S-Line Fittings

Part for ASTM A270 tubes



Finish: OD: Semi bright. ID: Mirror
Connections: Welding ends

Flange Adapter - Clamp X Flange

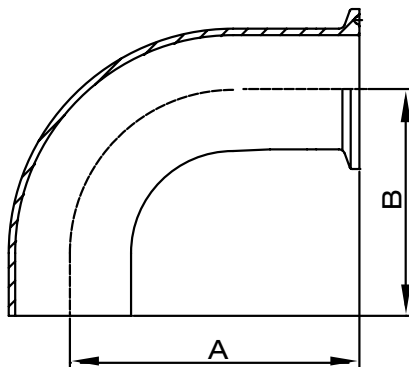


Basic Ordering Number: 5038

| NO. | Size | A | | B | | C | |
|-----------|------|-------|------|-------|------|-------|-------|
| | | inch | mm | inch | mm | inch | mm |
| 5038 0100 | 1" | 1.625 | 41.3 | 0.625 | 15.9 | 3.125 | 79.4 |
| 5038 0150 | 1.5" | 1.625 | 41.3 | 0.625 | 15.9 | 3.875 | 98.4 |
| 5038 0200 | 2" | 1.75 | 44.4 | 0.75 | 19.0 | 4.75 | 120.6 |
| 5038 0250 | 2.5" | 1.75 | 44.4 | 0.75 | 19.0 | 5.5 | 139.7 |
| 5038 0300 | 3" | 1.75 | 44.4 | 0.75 | 19.0 | 6 | 152.4 |
| 5038 0400 | 4" | 1.75 | 44.4 | 0.75 | 19.0 | 7.5 | 190.5 |
| 5038 0600 | 6" | 2.188 | 55.6 | 0.875 | 22.2 | 9.5 | 241.3 |

**T304 and T316L are available.

L2CM Weld X Tri-Clamp 90 Degree Elbow

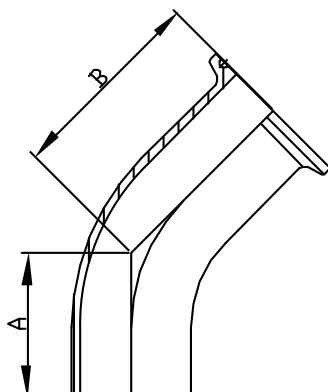


Basic Ordering Number: 5039

| NO. | Size | A | | B | |
|-----------|------|-------|-------|-------|-------|
| | | inch | mm | inch | mm |
| 5039 0100 | 1" | 2.563 | 65.1 | 2.063 | 52.4 |
| 5039 0150 | 1.5" | 3.438 | 87.3 | 2.938 | 74.6 |
| 5039 0200 | 2" | 4.563 | 115.9 | 4.063 | 103.2 |
| 5039 0250 | 2.5" | 5.688 | 144.5 | 5.188 | 131.8 |
| 5039 0300 | 3" | 6.813 | 173.0 | 6.313 | 160.3 |
| 5039 0400 | 4" | 8.938 | 227.0 | 8.313 | 211.1 |

**T304 and T316L are available.

L2KM Clamp X Weld 45 Degree Elbow



Basic Ordering Number: 5040

| NO. | Size | A | | B | |
|-----------|------|-------|-------|-------|-------|
| | | inch | mm | inch | mm |
| 5040 0100 | 1" | 1.188 | 30.2 | 1.688 | 42.9 |
| 5040 0150 | 1.5" | 1.625 | 41.3 | 2.125 | 54.0 |
| 5040 0200 | 2" | 2.312 | 58.7 | 2.812 | 71.4 |
| 5040 0250 | 2.5" | 3 | 76.2 | 3.5 | 88.9 |
| 5040 0300 | 3" | 3.688 | 93.7 | 4.188 | 106.4 |
| 5040 0400 | 4" | 4.812 | 122.2 | 5.437 | 138.1 |

**T304 and T316L are available.

NOTE! Treatment: Annealed.

**All measurements are in millimeters (mm)
Conversion to inches, 25.4mm=1inch

S-Line Fittings

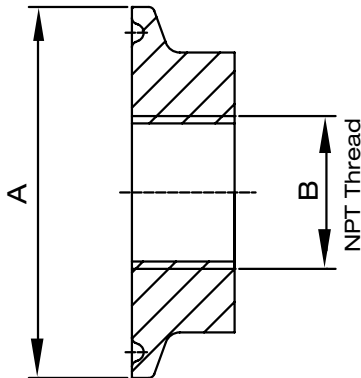
Part for ASTM A270 tubes

Finish: OD: Semi bright. ID: Mirror
Connections: Welding ends



1.1

23BMP
Thermometer Cap

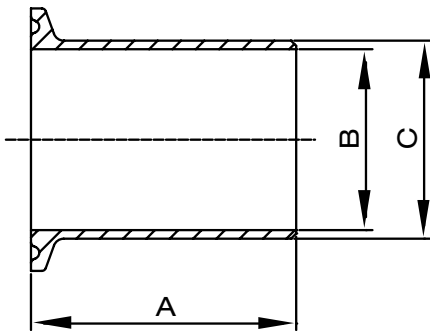


Basic Ordering Number: 5041

| NO. | Size | A | | B | |
|-----------|------|-------|-------|------|------|
| | | inch | mm | inch | mm |
| 5041 0100 | 1" | 1.988 | 50.5 | 0.5 | 12.7 |
| 5041 0150 | 1.5" | 1.988 | 50.5 | 0.75 | 19.0 |
| 5041 0200 | 2" | 2.520 | 64.0 | 0.75 | 19.0 |
| 5041 0250 | 2.5" | 3.050 | 77.5 | 0.75 | 19.0 |
| 5041 0300 | 3" | 3.580 | 91.0 | 0.75 | 19.0 |
| 5041 0400 | 4" | 4.685 | 119.0 | 0.75 | 19.0 |

**T304 and T316L are available.

TL14AM7
Automatic Weld Ferrules



Basic Ordering Number: 5042

| NO. | Size | A | | B | | C | |
|-----------|-------|------|------|-------|-------|------|-------|
| | | inch | mm | inch | mm | inch | mm |
| 5042 0050 | 0.5" | 1.75 | 44.4 | 0.37 | 9.4 | 0.5 | 12.7 |
| 5042 0075 | 0.75" | 1.75 | 44.4 | 0.62 | 15.7 | 0.75 | 19.05 |
| 5042 0100 | 1" | 1.75 | 44.4 | 0.87 | 22.1 | 1 | 25.4 |
| 5042 0150 | 1.5" | 1.75 | 44.4 | 1.37 | 34.8 | 1.5 | 38.1 |
| 5042 0200 | 2" | 2.25 | 57.1 | 1.87 | 47.5 | 2 | 50.8 |
| 5042 0250 | 2.5" | 2.25 | 57.1 | 2.37 | 60.2 | 2.5 | 63.5 |
| 5042 0300 | 3" | 2.25 | 57.1 | 2.87 | 72.9 | 3 | 76.2 |
| 5042 0400 | 4" | 2.25 | 57.1 | 3.834 | 97.4 | 4 | 101.6 |
| 5042 0600 | 6" | 3 | 76.2 | 5.782 | 146.9 | 6 | 152.4 |

**T304 and T316L are available.

**All measurements are in millimeters (mm)
Conversion to inches, 25.4mm=1inch

S-Line Fittings

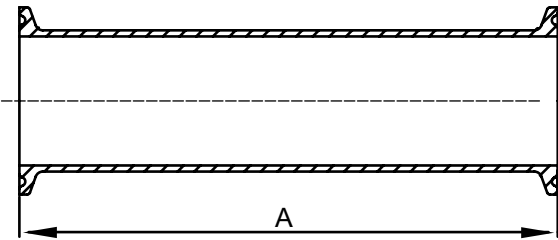
Part for ASTM A270 tubes



Finish: OD: Semi bright. ID: Mirror
Connections: Welding ends

Spool Assembly

Basic Ordering Number: 5043

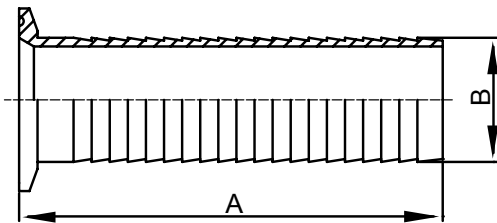


| NO. | Size | A | |
|-----------|------|------|------|
| | | inch | mm |
| 5043 0050 | 0.5" | 2.25 | 57.1 |
| 5043 0075 | 0.75 | 2.25 | 57.1 |
| 5043 0100 | 1" | 2.25 | 57.1 |
| 5043 0150 | 1.5" | 2.25 | 57.1 |
| 5043 0200 | 2" | 2.25 | 57.1 |
| 5043 0250 | 2.5" | 2.25 | 57.1 |
| 5043 0300 | 3" | 2.25 | 57.1 |
| 5043 0400 | 4" | 2.25 | 57.1 |
| 5043 0600 | 6" | 3 | 76.2 |

**T304 and T316L are available.

14MPHR Brewery Hose Barb Adapters

Basic Ordering Number: 5044



| NO. | Size | A | | B | |
|-----------|------|------|-------|-------|-------|
| | | inch | mm | inch | mm |
| 5044 0100 | 1" | 3.5 | 88.9 | 1.045 | 26.5 |
| 5044 0150 | 1.5" | 5 | 127 | 1.545 | 39.2 |
| 5044 0200 | 2" | 5 | 127 | 2.045 | 51.9 |
| 5044 0250 | 2.5" | 5.5 | 139.7 | 2.545 | 64.6 |
| 5044 0300 | 3" | 5.5 | 139.7 | 3.045 | 77.3 |
| 5044 0400 | 4" | 5.5 | 139.7 | 4.045 | 102.7 |

**T304 and T316L are available.

NOTE! Treatment: Annealed.

**All measurements are in millimeters (mm)
Conversion to inches, 25.4mm=1inch