



SPECIAL PURPOSE SOLENOID VALVES

For Steam, Hot Water, Anti-Water Hammer, 3-Way, 4-Way and Selectable Service

3-WAY CONTROL

A three-way valve is normally used to control larger valves; it has an inlet port, an exhaust port, and a common cylinder port.

SPECIFICATIONS

Wetted Parts: SV-200: brass, stainless steel, copper and seal (SV-242 Delrin additional) (SV-271: aluminum, Delrin, stainless steel, copper, and seal) (SV-281,-282, Viton® additional).

Medium: Liquids or gases

Max. Static Pressure: 5 x Max psid

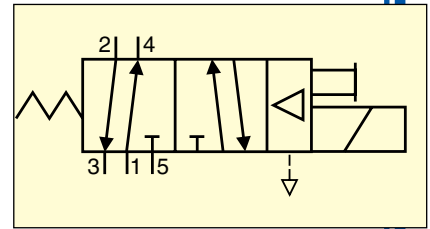
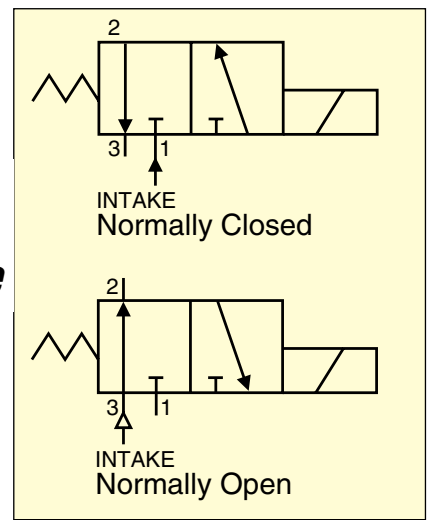
Ambient Temp.: 15 to 122°F (-9 to 50°C)

Mounting: Pipe mounting, any direction

Power: 10 watts, 120 Vac, Class F (PV-231 to 235, 22 watts, 120 Vac Class H)

4-WAY CONTROL

A four-way valve has an inlet port (1), two cylinder ports (2 and 4), and two exhaust ports (3 and 5). They are generally used to control double-acting actuators.



To Order

MODEL	FITTING NPT	ORIFICE	CV	SEAL	DIFF. PRESS (PSID)		TEMP (°F) (°C)	RESPONSE TIME	
					MIN	MAX		OPEN	CLOSE
HOT WATER, DIRECT LIFT, 2-WAY NORMALLY CLOSED BRASS VALVES									
SV221	¼	13/64	0.76	EPDM	0	100	99 (210)	4-8 ms	4-8 ms
SV222	¾	5/8	4.40	EPDM	0	150	99 (210)	30-100 ms	30-100 ms
SV223	½	5/8	4.40	EPDM	0	150	99 (210)	30-100 ms	30-100 ms
SV224	¾	5/8	5.50	EPDM	0	150	99 (210)	30-100 ms	30-100 ms
SV225	1	1	11.70	EPDM	0	150	99 (210)	30-100 ms	30-100 ms
STEAM, DIRECT LIFT, 2-WAY NORMALLY CLOSED BRASS VALVES									
SV231	¼	13/64	0.76	EPDM	0	40	141 (285)	4-8 ms	4-8 ms
SV232	¾	5/8	4.40	EPDM	0	45	145 (293)	30-100 ms	350-900 ms
SV233	½	5/8	4.40	EPDM	0	45	145 (293)	30-100 ms	350-900 ms
SV234	¾	5/8	5.50	EPDM	0	45	145 (293)	30-100 ms	350-900 ms
SV235	1	1	11.70	EPDM	0	45	145 (293)	30-100 ms	350-900 ms
GENERAL PURPOSE, DIRECT ACTING, 3-WAY NORMALLY CLOSED BRASS VALVES, LIQUIDS OR GASES									
SV241	¼	5/64, 1/8	.17 .31	Viton®	0	150	116 (240)	10 ms	10 ms
SV242	¼	3/32, 9/64	.24 .38	Viton®	0	100	116 (240)	10 ms	10 ms
SELECTABLE SERVICE, DIRECT ACTING, 3-WAY CUSTOMER SWITCHABLE NORMALLY CLOSED OR NORMALLY OPEN BRASS VALVE, LIQUIDS OR GASES									
SV251	¼	5/64, 5/64	.17 .17	Viton®	0	100	116 (240)	10 ms	10 ms
QUICK EXHAUST, PILOT-OPERATED, 3-WAY NORMALLY CLOSED BRASS VALVE, AIR ONLY									
SV261	¼	3/32, 1/4	.20 1.1	Buna N	2	100	85 (185)	15 ms	45 ms
GENERAL PURPOSE, PILOT-OPERATED, 4-WAY NORMALLY CLOSED ALUMINUM AIR VALVE									
SV271	½	5/32	.35	Buna N	15	150	74 (165)	10-30 ms	10-30 ms
ANTI-WATER HAMMER, PILOT-OPERATED, 2-WAY NORMALLY CLOSED BRASS VALVES (*NON-ADJUSTABLE RESPONSE TIME)									
SV281	¾	7/16	2.5	Buna N	3	150	85 (185)	.015 s	.850 s
SV282	½	7/16	2.5	Buna N	3	150	85 (185)	.015 s	.850 s
SV283	¾	¾	9.6	Buna N	5	230	85 (185)	.1-.25 s	.6-4.5 s
SV284	1	1	12.5	Buna N	5	230	85 (185)	.1-.25 s	.5-4.5 s
SV285	1¼	1½	19.3	Buna N	5	230	85 (185)	.2-.5 s	.8-5.8 s
SV286	1½	1¾	29.0	Buna N	5	230	85 (185)	.2-.4 s	1.5-9.0 s
SV287	2	1¾	38.6	Buna N	5	230	85 (185)	.25-.45 s	1.5-9.5 s
ANTI-WATER HAMMER, PILOT-OPERATED, 2-WAY NORMALLY OPEN BRASS VALVES									
SV291	¾	¾	9.6	Buna N	5	230	85 (185)	.1-.25 s	.6-4.5 s
SV292	1	1	12.5	Buna N	5	230	85 (185)	.1-.25 s	.5-4.5 s
SV293	1¼	1½	19.3	Buna N	5	230	85 (185)	.2-.5 s	.8-5.8 s
SV294	1½	1¾	29.0	Buna N	5	170	85 (185)	.1-.4 s	1.5-9.0 s
SV295	2	1¾	38.6	Buna N	5	170	85 (185)	.25-.45 s	1.5-9.5 s

VALVES AND REGULATORS