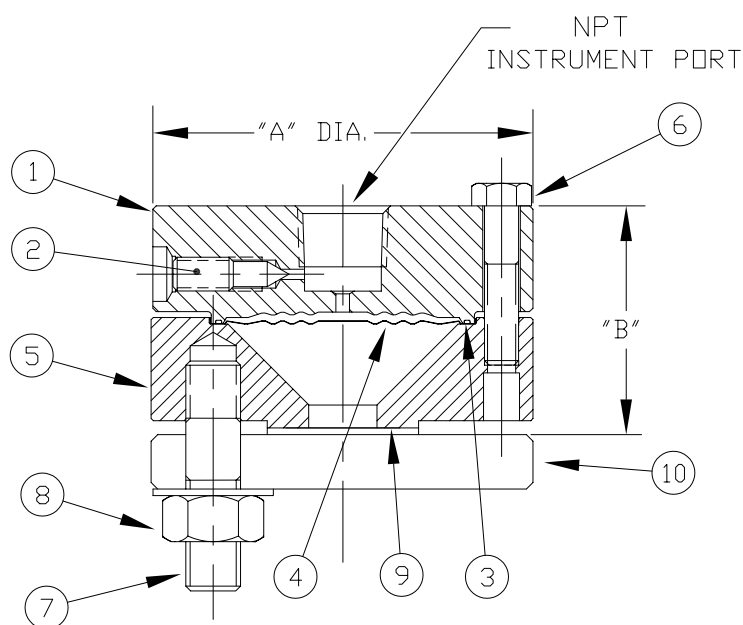


SOLD TO : ULTIMATE CUSTOMER : (IF AVAILABLE)		P.O. # : P.O. # :
U.S. GAUGE NO. :	DRW. TO :	CUST. SPEC. NO. :
ORDER ITEM NO. :	QUANTITY :	FILL FLUID :



DESCRIPTION	QTY.
① TOP	1
② FILLING SCREW	1
③ O-RING	1
④ DIAPHRAGM	1
⑤ BOTTOM	1
⑥ SCREW 5/16-18 HEX. HEAD	8
⑦ STUD	4
⑧ NUT	4
⑨ GASKET (BY USER)	1
⑩ FLANGE (BY USER)	1

1/2" CLASS 300 & 600  
3/4" CLASS 150  
TYPE RC  
METAL EXPOSED SURFACE  
SEE SK-5247 FOR DIMENSIONS

### INSTRUMENT DESCRIPTION

- INSTALLATION : - INSTALL CALIBRATED UNIT (AS AN ASSEMBLY) PART #'S 1, 2, 3, 4, 5, 6 AND 7 ON STANDARD ANSI FLANGE.  
- SECURE WITH NUT PART #8.
- OPERATION : - WHEN CLEANING IS REQUIRED REMOVE NUTS PART #8, CALIBRATED UNIT AS AN ASSEMBLY, PART # 1, 2, 3, 4, 5, 6, 7.  
- CLEAN AND REINSTALL - USING A NEW GASKET.
- CAUTION : - DO NOT LOOSEN INSTRUMENT, FILLING SCREW PART #2, AS LOSS OF LIQUID FILL WILL RESULT AND RECALIBRATION WILL BE NECESSARY.

DRAWING CERTIFIED CORRECT,  
DATE :

AMETEK/MANSFIELD & GREEN

	<b>AMETEK</b>	MANSFIELD & GREEN DIVISION	LARGO , FLORIDA 34643
--	---------------	----------------------------	-----------------------

CODE IDENT. NO. 92456	REVISION							M & G DIAPHRAGM SEAL TYPE RC DATA AND INSTRUCTION SHEET DRAWING NO. : SK-5232
	DATE							