

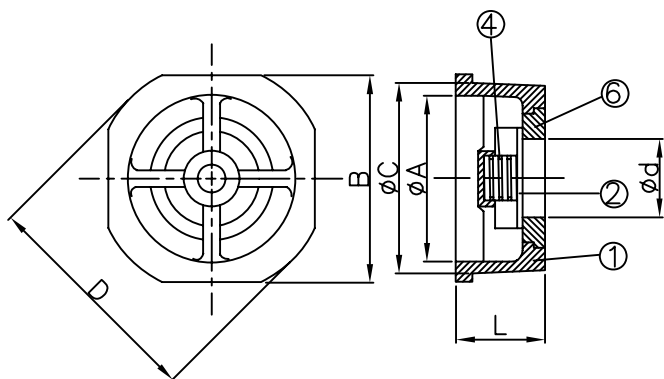
Fig.No. ZT-C801 WAFER CHECK VALVES

INSTALLATION: DIN PN-10-16-25-40

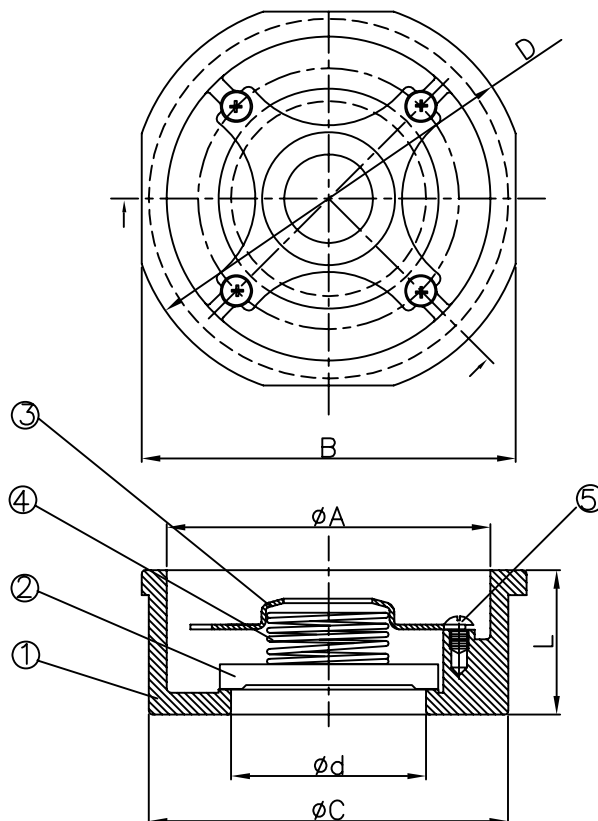
L: DIN 3202 K4

PRESSURE RATING: PN40

For safety reason, Suggest to liquid material installation only.



FOR SIZE DN15~DN50



FOR SIZE DN65 AND OVER

DN	inch	ød	øA	B	øC	D	L	W (kg)	Cv FACTOR
15	1/2"	15	34	45	41	53	16	0.1	25
20	3/4"	20	37	55	46	63	19	0.16	50
25	1"	25	46	65	56	73	22	0.28	80
32	1-1/4"	32	63	79	74	84	28	0.52	150
40	1-1/2"	38	76	89	86	94	31.5	0.7	240
50	2"	50	83	99	96	107	40	1.1	360
65	2-1/2"	62	103	118	115	126	46	1.58	570
80	3"	76.5	117	134	131	144	50	1.76	880
100	4"	96	132	154	150	164	60	3.3	1600

UNIT: mm

Opening pressure STD in Mbar
Presion apertura Standard en Mbar

DN	25	21	23
15	↑	↓	→

DN	31	21	25
65	↑	↓	→

DN	25	21	23
20	↑	↓	→

DN	32	21	26
80	↑	↓	→

DN	25	21	23
25	↑	↓	→

DN	33	21	27
100	↑	↓	→

DN	27	21	24
32	↑	↓	→

DN	29	21	25
40	↑	↓	→

DN	29	21	25
50	↑	↓	→

MATERIAL LIST

NO	DESCRIPTION	MATERIAL
1	BODY	EN10213-4 1.4408
2	DISC	AISI 316
3	CAP	AISI 316
4	SPRING	AISI 316
5	SCREW	AISI 316
6	INSERT	AISI 316

ZHE THAI MACHINERY CO., LTD.