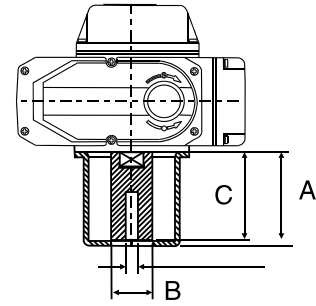
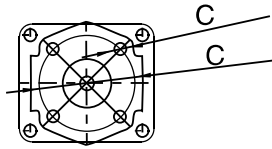
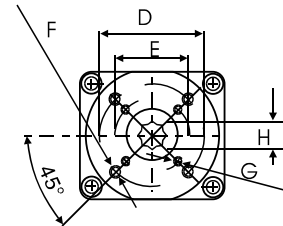
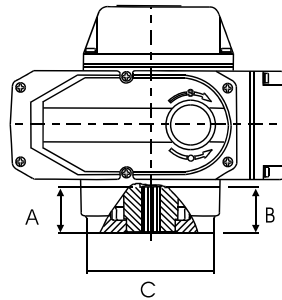


# HTE Electric Actuator – Dimension Table



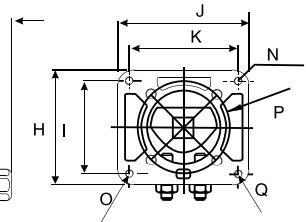
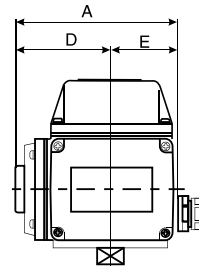
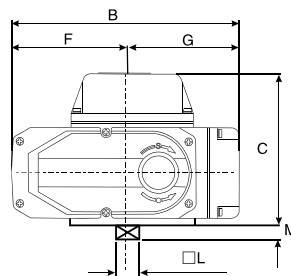
## Actuator+Mounting Bracket+Coupling

Model	A	B	C
HTE-03/05 & K1	60	28	follow valve's dimension
HTE-10 & K2	80	35	
HTE-20 & K3	80	48	
HTE-40/60 & K4	100	48	
HTE-100/160	80	65	
HTE-200	100	65	



## Actuator + ISO-5211 Mounting Bracket

Model	A	B	C	D	E	F	G	◇H
HTE-03/05 & K1	19	22	70	50	36	4-M6	4-M5	9 /11/14
HTE-10 & K2	33	36	90	70	50	4-M8	4-M6	9 /11/14
HTE-20 & K3	45	48	125	102	70	4-M10	4-M8	14/17
HTE-40/60 & K4	45	48	125	102	70	4-M10	4-M8	17/22
HTE-100/160	47	50	135	125	102	4-M10	-----	22/27
HTE-200	67	70	175	165	140	4-M16	-----	36



## Bare Shaft Actuator

Model	A	B	C	D	E	F	G	H	I	J	K	□L	M	N	O	P	Q
HTE-02/03/05 & K1	113	160	102.5	63	49	83	77	72	60	80	68	12	12	63	70	8-M6	4-M8
HTE-10 & K2	121	196	126	71	50	98	98	86	70	98	82	15	12	-----	70	-----	8-M8
HTE-20/40 & K3	158	255	148	95	63	121	134	106	84	135	118	23	23	-----	-----	4-M8	4-M10
HTE-60 & K4	158	255	148	95	63	121	134	106	84	135	118	25	23	-----	-----	4-M8	4-M10
HTE-100/160/200	207	310	162	120	87	148	162	140	116	160	136	30	26	-----	-----	4-M10	4-M12