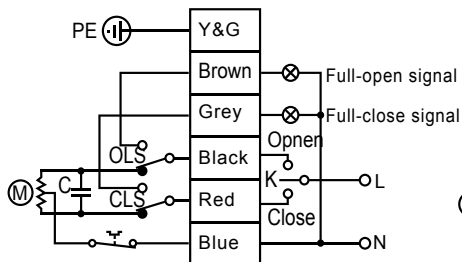
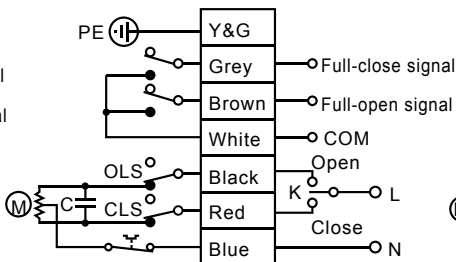


Model	HTE-02S			
Power	110/220VAC		24VDC	
Output Torque(N.m/in.lbs)	18/160	9/80	18/160	9/80
Operation Speed(sec.)	12	6	12	6
Power Consumption(W)	6		8	
Rated Current(A)	0.15	0.28	1.10	
Insulation Resistance	100MΩ@500VDC		100MΩ@250VDC	
Withstand Voltage	1500VAC@1 Min.		550VAC@1 Min.	
Thermal Protection	standard accessory, built-in, auto-reset type			
Mounting Direction	All directions			
Ambient Temp.	-30 ~ +60°C			
Valve Connection	ISO5211, □9/11mm x F03/F04/F05			
Dimension(mm)	72(W) x 75(L) x 120(H)			
Enclosure	IP68			
Housing Material	Die-casting aluminum alloy			
Weight(Kg/Lbs)	1.2/2.65			

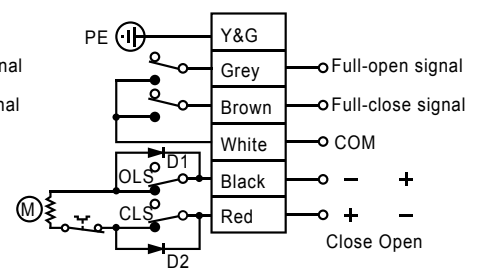
Wiring Diagram



Type:A



Type:B



Type G(24VDC)