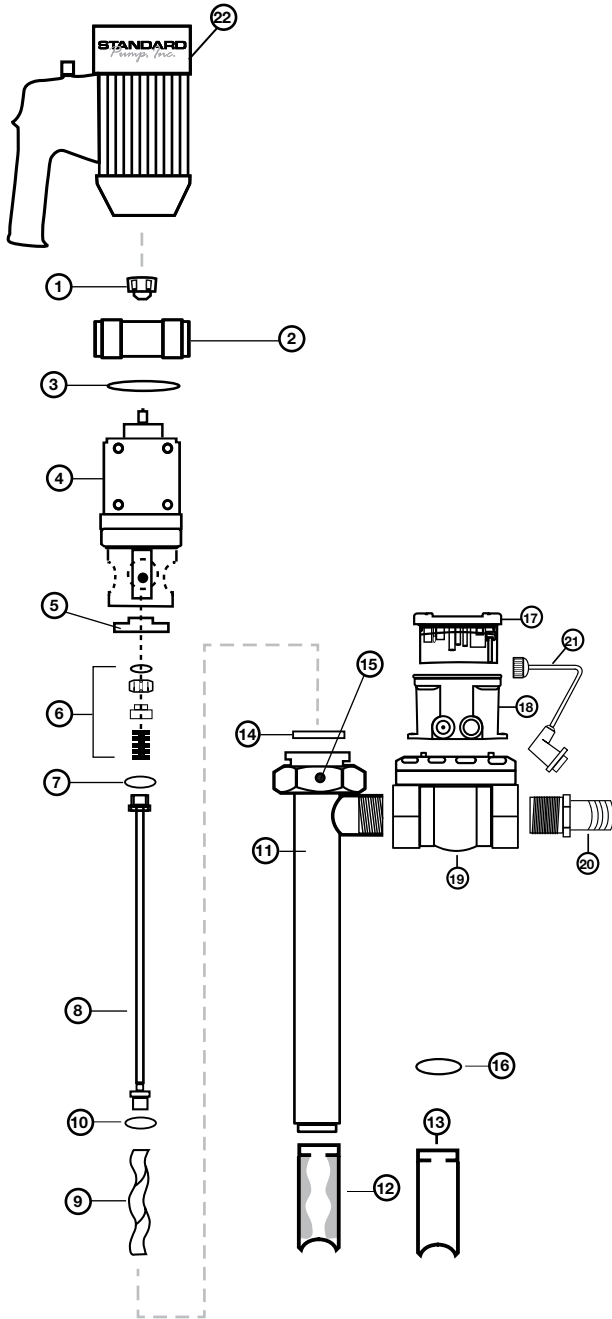


Models: 7610, 7611, 7620, 7621, 7614, 7615, 7624, 7625, 7630, 7631, 7640, 7641, 7634, 7635, 7644 & 7645

Oval Gear High Viscosity Batch Control System – Electric Spare Parts List



Electric Oval Gear BCS See Figure 31

Ref #	Description	P/N for Electric BCS
1	Pump Coupling	1004
2	Connection Nut, SS316	8842
3	Snap Ring, SS316	8208
4	Gear Reduction Unit, SS316 & Aluminum	701
5	Mechanical Seal Bushing, SS316	702
6	Mechanical Seal, SIC	703
7	Gasket, PTFE	735
8	Drive Shaft, SS316	
	Pump Sizes - SP-1851-39	705
	Pump Sizes - SP-751-39	706
	Pump Sizes - SP-1851-47	706
	Pump Sizes - SP-751-47	707
9	Rotor, SS316	
	Size 751	708
	Size 1851	710
10	Gasket, PTFE	731
11	Outer Tube Assembly, SS316	
	Pump Sizes - SP-1851-39	771
	Pump Sizes - SP-751-39	772
	Pump Sizes - SP-1851-47	772
	Pump Sizes - SP-751-47	773
12	Stator, PTFE (Stator Insert Only)	
	Size 751	722
	Size 1851	724
13	Stator Tube, SS316	
	Size 751	774
	Size 1851	776
14	Gasket, PTFE	738
15	Set Screw, SS316	757
16	Ring, SS316	0016
17	Batch Control Module	F9.50.SP
18	Batch Control Mounting Bracket	F9.KW1
19	Oval Gear Flow Chamber, Aluminum	M40ARP-2EHZ
20	Hose Barb, SS316, 1.5" (38 mm)	HB150SS
21	Communication Cable	RSW 40-637/3 Ft.
22	Batch Control Motor, TEFC	
	110-120V	SP-ENC-BC
	220-120V	SP-ENC-2-BC

Figure 31

Models: 7610, 7611, 7620, 7621, 7614, 7615, 7624, 7625, 7630, 7631, 7640, 7641, 7634, 7635, 7644 & 7645

Electric & Air Motors Spare Parts Lists

SP-ENC See Figure 33

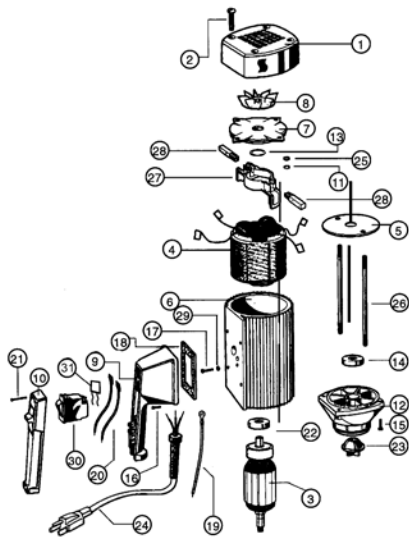


Figure 33 – SP-ENC

Ref. #	Description	P/N for SP-ENC	Qty
1	Motor Cover	3000	1
2	Screw, Motor Cover	3130	1
3	Armature, 110-120V	3502	1
	220-240V	3701	1
4	Stator, 110-120V	3503	1
	220-240V	3702	1
5	Guide Disc	3504	1
6	Motor Housing	3510	1
7	Bearing Cover	3511	1
8	Fan	3512	1
9	Switch Housing for Batch Control, Includes Potentiometer and BCS Port Connection		
	110-120V	8006	1
	220-240V	8007	1
10	Switch Cover	8002	1
11	Lock Washer	8071	2
12	Lower Housing	8100	1
13	Wave Washer	8125	1
14	Ball Bearing, Lower	8126	1
15	Screw, Lower Housing	8130	4
16	Screw, Switch Housing		
	110-120V	8131	4
	220-240V	8131LVR	4
17	Ground Screw	8162	1
18	Gasket, 110-120V	8167	1
	220-240V	8167LVR	1
19	Earthing Lead	8185	1
20	Lead	8183	2
21	Screw, Switch Cover	8220	5
22	Ball Bearing, Upper	8331	1
23	Motor Coupling	8333	1
24	Power Cord w/Strain Relief & Plug,		
	110-120V	8360	
	220-240V	8705	1
25	Hexagon Nut	8448	2
26	Rod Connector	3703	2
27	Brush Holder	8508	1
28	Carbon Brush, 110-120V	8509	2
	220-240V	8703	2
29	Star Washer	8511	1
30	Overload Switch,		
	8.5 amp 110-120V	8611	
	5 amp 220-240V Low Voltage Release	8704LVR	1
31	EMI Filter	8003	1
32	Repair Kit 110-120V (includes PN's 8333 & (2) 8509)	9055	1
33	Repair Kit 220-240V (includes PN's 8333 & (2) 8703)	9056	1

SP-ENC Series motors should not be used to pump flammables.