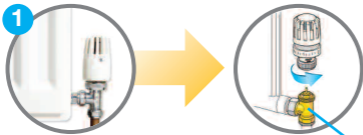


Check the compatibility of your existing TRV's

The JG TRV is compatible with a large number of TRV's such as Danfoss, Myson, Honeywell, Drayton, Altech and others. Before attempting to fit please check your valve is suitable for use with the JGTRV.



Remove the TRV head

Valve

Note: If all the measurements are as stated on this page then the TRV will fit directly to your valve. Also if your valve is not suitable please consider changing your existing valves, contact your installer.



Measure the thread diameter (must measure 30mm).



Measure the pin length of the valve when it is in the open position.

(must measure between 13-16mm when measured as illustrated. The moving pin should be parallel and not tapered)

Checking the compatibility of your heating system

4

If you can not see any thread on the valve and it looks like this picture, you may be able to use the RA adapter supplied.



Our RA adapter also fits this valve.



Once fitted the RA adapter should look like this.