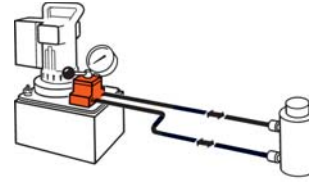


VALVES

Selection Information

Pump Mounted Valves



PUMP MOUNTED VALVES

Order No.	Page No.	*Cylinder Application	Operation	Valve Type	Volt	Advance/Return	Advance/ Hold Return	Posi Check® Feature
9500	125	S.A. & D.A.	Manual	4-way, 3 Pos. Tandem Center	—	no	yes	no
9501	125	S.A. & D.A.	Manual	4-way, 3 Pos. Closed Center	—	no	yes	no
9502	124	S.A.	Manual	3-way, 3 Pos. Closed Ctr.	—	no	yes	yes
9504	123	S.A. & D.A.	Manual	3/4-way, 2 Pos.	—	yes	yes	no
9506	125	D.A.	Manual	4-way, 3 Pos. Tandem Center	—	no	yes	yes
9507	125	D.A.	Manual	4-way, 3 Pos. Closed Center	—	no	yes	yes
9511	125	S.A. & D.A.	Manual	4-way, 3 Pos. Open Center	—	yes	yes	no
9512	128	D.A.	Solenoid	4-way, 3 Pos. Tandem Center	24	no	yes	yes
9513	128	D.A.	Solenoid	4-way, 3 Pos. Tandem Center	115	no	yes	yes
9516	128	D.A.	Solenoid	4-way, 3 Pos. Tandem Center	12DC	no	yes	yes
9517	123	S.A.	Manual	2-way, 2 Pos.	—	no	yes	no
9519	128	D.A.	Solenoid	4-way, 3 Pos. Tandem Center	230	no	yes	yes
9520	124	S.A.	Manual	4-way, 3 Pos. Tandem Center	—	no	yes	yes
9522	128	D.A.	Solenoid	4-way, 3 Pos. Open Center	230	yes	no	no
9523	128	S.A.	Pilot Operated Solenoid	3-way, 2 Pos.	230	yes	no	no
9552	127	S.A. & D.A.	Solenoid	3/4-way, 2 Pos.	230	yes	no	no
9553	128	S.A.	Pilot Operated Solenoid	3-way, 2 Pos.	24	yes	no	no
9569	127	S.A.	Solenoid	3-way, 2 Pos.	24	no	yes	no
9570	127	S.A.	Solenoid	3-way, 2 Pos.	230	no	yes	no
9572	127	S.A. & D.A.	Solenoid	3/4-way, 2 Pos.	24	yes	no	no
9576	124	S.A.	Manual	3-way, 3 Pos. Metering Tandem Ctr.	—	no	yes	no
9579	127	S.A.	Solenoid	3-way, 2 Pos.	115	no	yes	no
9582	123	S.A.	Manual	3-way, 2 Pos.	—	no	yes	no
9584	123	S.A.	Manual	3-way, 2 Pos.	—	no	yes	no
9589	128	S.A.	Pilot Operated Solenoid	3-way, 2 Pos.	115	yes	no	no
9590	128	D.A.	Solenoid	4-way, 3 Pos. Open Center	115	yes	no	no
9592	127	S.A. & D.A.	Solenoid	3/4-way, 2 Pos.	115	yes	no	no
9594	127	S.A. & D.A.	Air	3/4-way, 2 Pos.	—	no	yes	yes
9599	126	S.A.	Pilot Operated Solenoid	3-way, 3 Pos. Tandem Center	24	no	yes	yes
9605	126	S.A.	Pilot Operated Solenoid	3-way, 3 Pos. Tandem Center	115	no	yes	yes
9609	126	S.A.	Manual	3-way, 3 Pos. Tandem Center	—	no	yes	no
9610	123	S.A.	Auto Pilot Operated	3-way, 2 Pos.	—	yes	no	no
9610A	123	S.A.	Manual	2/3-way, 2 Pos.	—	no	yes	no
9615	128	D.A.	Solenoid	4-way, 3 Pos. Open Center	24	yes	no	no
9628	129	S.A. & D.A.	Manual	Post Tensioning	—	special	no	no
9632	129	S.A. & D.A.	Manual	Post Tensioning	—	special	no	no

* "S.A." represents single-acting cylinders, "D.A." represents double-acting cylinders

