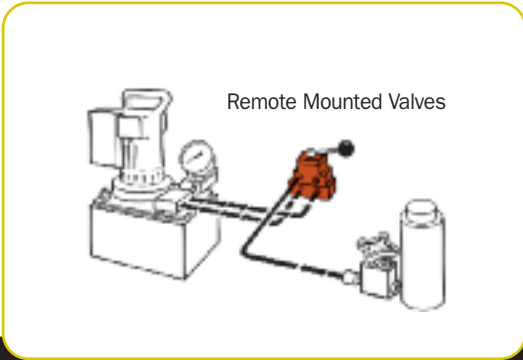
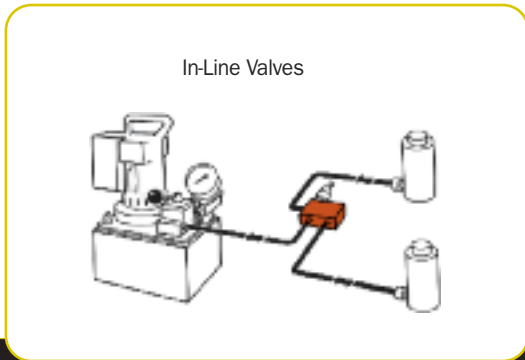


VALVES

Remote/In-Line Valve selection chart



Order No.	Page No.	*Cylinder Application	Operation	Valve Type	Volt	Advance/Return	Advance/ Hold Return	Posi-Check® Feature
9508	117	S.A. & D.A.	Manual	4-way, 3 Pos. Closed Center	—	no	yes	yes
9509	117	S.A. & D.A.	Manual	4-way, 3 Pos. Tandem Center	—	no	yes	yes
9514	117	D.A.	Solenoid	4-way, 3 Pos. Tandem Center	115	no	yes	yes
9524	116	S.A. & D.A.	Solenoid	3/4-way, 2 Pos.	230	no	yes	no
9525	117	D.A.	Solenoid	4-way, 3 Pos. Tandem Center	230	no	yes	yes
9526	117	S.A.	Solenoid	3-way, 2 Pos.	230	no	yes	no
9554	116	S.A. & D.A.	Solenoid	3/4-way, 2 Pos.	24	no	yes	no
9555	117	D.A.	Solenoid	4-way, 3 Pos. Tandem Center	24	no	yes	yes
9556	117	S.A.	Solenoid	3-way, 2 Pos.	24	no	yes	no
9559	117	S.A.	Solenoid	3-way, 2 Pos.	115	no	yes	no
9593	116	S.A. & D.A.	Solenoid	3/4-way, 2 Pos.	115	no	yes	no
9595	116	S.A. & D.A.	Air	3/4-way, 2 Pos.	—	no	yes	no



Order No.	Page No.	*Cylinder Application	Operation	Valve Type	Volt	Advance/Return	Advance/ Hold Return	Posi-Check® Feature
9575	118	S.A.	Manual	Shut-Off Valve	—	—	—	—
9580	119	S.A.	Automatic	One-way Check Valve	—	—	—	—
9581	119	S.A. & D.A.	Automatic	Pilot Op. Check Valve	—	—	—	—
9596	118	S.A.	Manual	Load Lowering Valve	—	—	—	—
9597	118	S.A. & D.A.	Automatic	Sequence Valve	—	—	—	—
9608	118	S.A. & D.A.	Automatic	Pressure Reducing Valve	—	—	—	—
9623	119	S.A. & D.A.	Automatic	Pressure Relief Valve	—	—	—	—
9631	119	S.A. & D.A.	Automatic	Metering Valve	—	—	—	—
9633	119	S.A. & D.A.	Automatic	Pressure Regulator Valve	—	—	—	—
9720	118	S.A. & D.A.	Automatic	Counter Balance Valve	—	special	—	—
9721	118	S.A. & D.A.	Automatic	Counter Balance Valve	—	special	—	—
RV21278	119	—	Automatic	Relief Valve	—	—	—	—

*S.A." represents single-acting cylinders, "D.A." represents double-acting cylinders.
For pump-mounted valves, see pages 51-57.