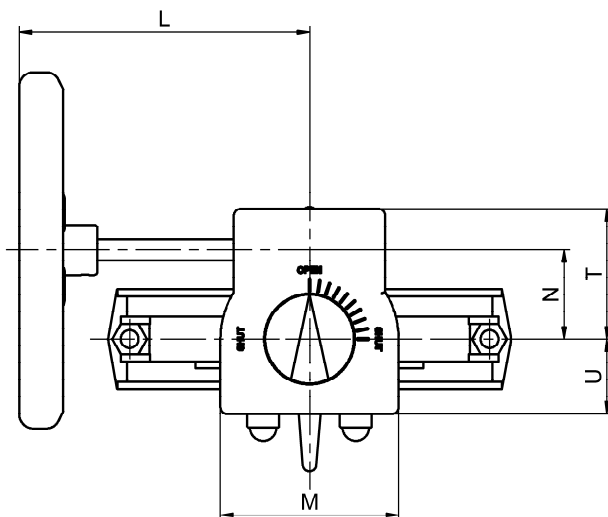
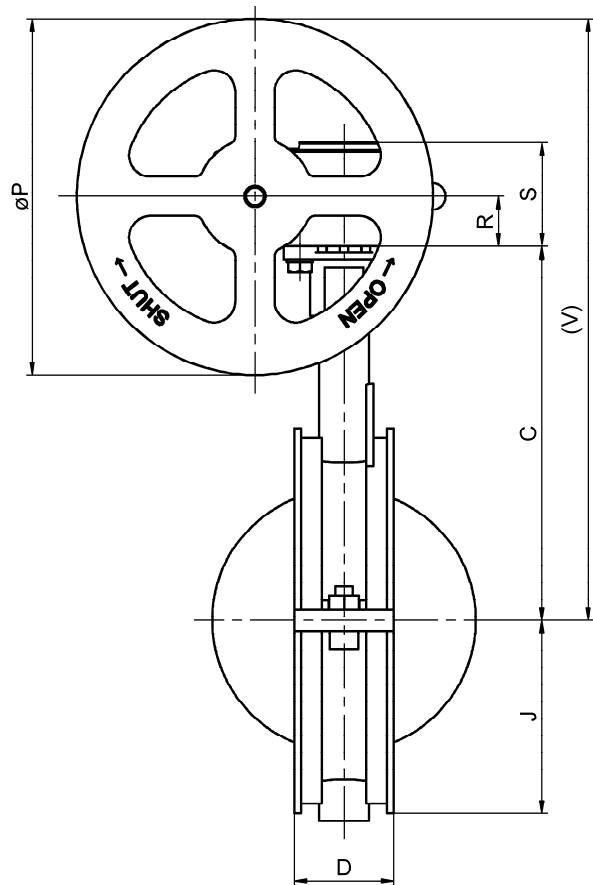
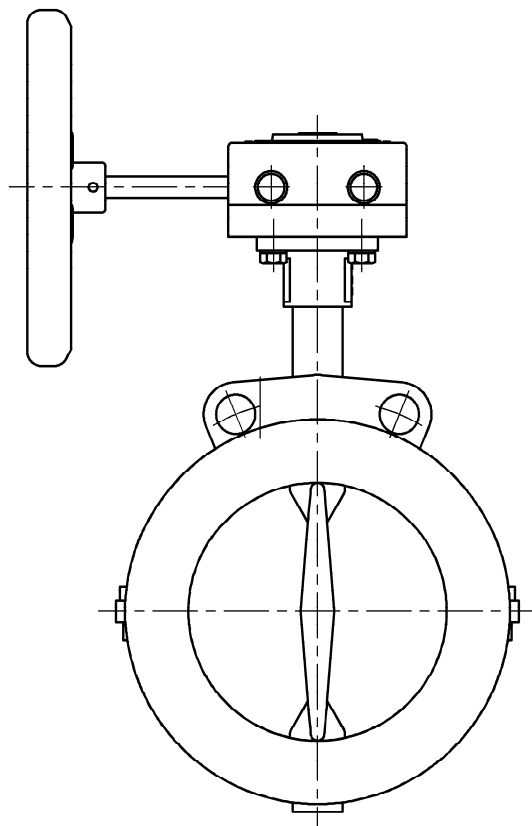


Processklappe Serie K11 mit Aluminium Getriebe BGH

Butterfly valve series K11 with aluminium gear operator BGH

DN 50 - DN 150



Getriebewerkstoffe / Gear materials

Gehäuse / Body: Aluminium / aluminium
 Welle / Stem: Edelstahl / stainless steel
 Handrad / Handwheel: Stahl / steel

Gewicht des Getriebes inklusive Handrad und Montageplatte.

Klappenspezifische Daten entnehmen Sie bitte den entsprechenden Datenblättern.

Weight of gear operator including handwheel and mounting plate.

Regarding valve data please refer to relevant data sheets.

DN	NPS	Getriebe Typ Gear type	C	D	J	L	M	N	ØP	R	S	T	U	V	kg
50	2"	BGH200900711140	130	43	51	160	100	50	140	28	58	73	57	228	1,8
65	2 1/2"	BGH200900711140	145	46	58	160	100	50	140	28	58	73	57	243	1,8
80	3"	BGH200900711140	160	46	68	160	100	50	140	28	58	73	57	258	1,8
100	4"	BGH200900714140	180	52	80	160	100	50	140	28	58	73	57	278	1,8
125	5"	BGH200900717200	195	56	95	163	100	50	200	28	58	73	57	323	2,2
150	6"	BGH200900717200	210	56	108	163	100	50	200	28	58	73	57	338	2,2