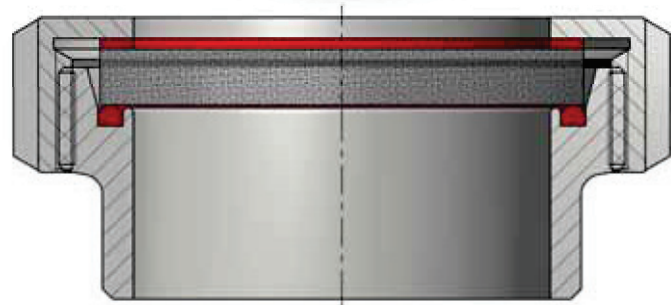
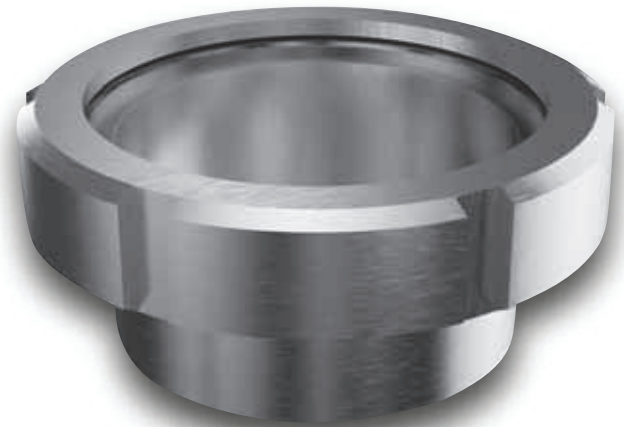


### Standard design

- Material: 1.4571/1.4404 (threaded nozzle)  
1.4301 (cap nut)
- Perbunan-/PTFE-gasket
- Heavy wall nozzle (t=5,0-6mm)
- Borosilicatglass-pane acc DIN 7080
- MAWP: 6bar

### Options

- Materials: 1.4435, 1.4539, 1.4529, 1.4462, 1.4429, HC-22, HC-276, HC-2000, etc.
- Various shapes of nozzles
- Other glass materials
- Other gasket materials



Article No.	NW	Weight [kg]	Glass pane [mm]	Price per piece in EUR (loose)	Centrally welded Price in EUR
210 25	25	0,4	Ø 38 x 9		
210 40	40	0,6	Ø 50 x 10		
210 50	50	0,8	Ø 63 x 10		
210 65	65	1,3	Ø 80 x 12		
210 80	80	1,8	Ø 94 x 11		
211 00	100	2,5	Ø 113 x 15		
211 25	125	3,2	Ø 142 x 15		
211 50	150	3,8	Ø 166 x 15		

### Spare parts/Components

Description	NW25 Price in EUR Article No.	NW40 Price in EUR Article No.	NW50 Price in EUR Article No.	NW65 Price in EUR Article No.	NW80 Price in EUR Article No.	NW100 Price in EUR Article No.	NW125 Price in EUR Article No.	NW150 Price in EUR Article No.
Threated nozzle (loose)	2020	2040	2050	2065	2080	2100	2125	2150
Threated nozzle (centrally welded)	2020	2040	2050	2065	2080	2100	2125	2150
Cap nut	2020 1	2040 1	2050 1	2065 1	2080 1	2100 1	2125 1	2150 1
Borosilicatglass-pane DIN 7080	210 251	210 401	210 501	210 651	210 801	211 001	211 251	211 501
PTFE-gasket (atmospheric)	210 252Te	210 402Te	210 502Te	210 652Te	210 802Te	211 002Te	211 252Te	211 502Te
Perbunan-gasket (wetted)	210 253Pe	210 403Pe	210 503Pe	210 653Pe	210 803Pe	211 003Pe	211 253Pe	211 503Pe
PTFE-gasket (wetted)	210 253Te	210 403Te	210 503Te	210 653Te	210 803Te	211 003Te	211 253Te	211 503Te

