

FUNCTION

The Girard Equipment 3" Magnetic Vacuum Breaker is a valve designed to prevent negative pressure (vacuum) from developing and imploding a typical tank transport.

Girard Equipment uses a permanent magnetic force along with conventional springs to control the movement of the valve seat. Permanent magnetization within the valve, holds the seat tightly closed during transit and allows movement only on demand of 2" Hg, or greater.

The unit is equipped with either a "Tef-O-Sil" "O" Ring, Viton® "O" Ring, or a Kalrez® gasket to meet the requirements for bubble-tightness given in docket HM-183.



Styles	Description
3MVB-SX	Complete vacuum breaker with stub end outlet. Designed to be welded in the dome of the transport.
3MVB-MX	Complete vacuum breaker with 18 degree stub end outlet. Designed to be welded in the dome of the transport and to conform to its curvature.
3MVB-FX	Complete vacuum breaker with 3" TTMA drilled flange outlet. Designed for installation on the flanged nozzle in the transports.
3MVB-TX (Shown in photo)	Complete vacuum breaker with a 3" N.P.T. swivel nut outlet. Designed for attachment to a tank truck "cleanout" nipple.

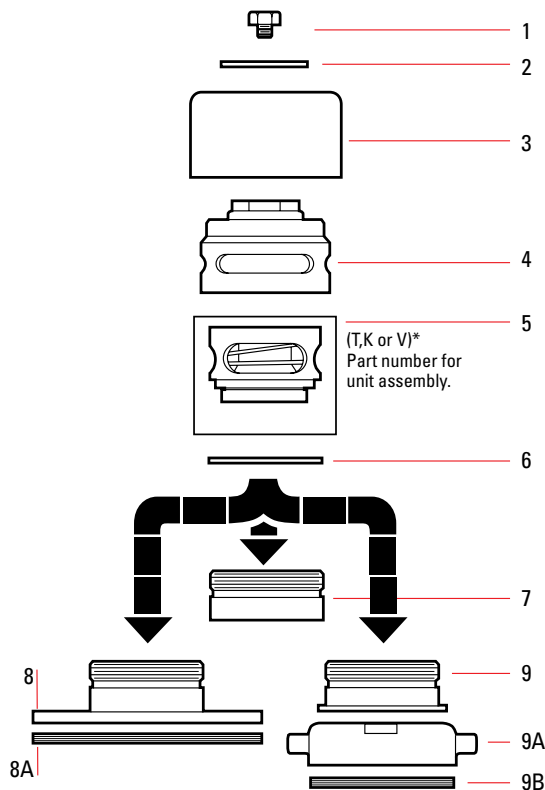
SEAT TYPE	(substitute letter code for "X")
Teflon® Seat with a Tef-O-Sil "O" Ring.	T
Teflon® Seat with a Kalrez® Gasket.	K
Teflon® Seat with Viton® Gasket	V

MATERIALS OF CONSTRUCTION

All Metallic Parts	Stainless Steel
Valve Seat	Teflon® with "Tef-O-Sil," or Kalrez®
Gaskets	Teflon® / Teflon® Envelope
Magnets	Ferrite

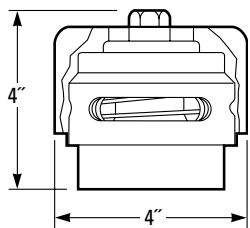
PERFORMANCE

Instant Opening	At 2" Hg. Flow rates at 2" Hg - 11,900 SCFH. For high flow rate vacuum breakers see "New Generation DOT 407 Magnetic vacuum Breakers
Test Pressure	Seat is bubble tight on pressures from 0-50 PSIG.
Vibration Test	25 times gravitational acceleration, or 25G.
Magnetic Field	Ferrite Magnets - can not be contaminated by surrounding metals, or products being transported.
Teflon®	Suited for all ladings. (Check with the manufacturer).
Kalrez®	Identical chemical properties as Teflon®. Suited for all ladings.

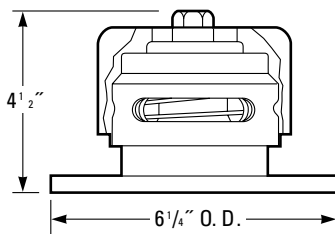


Item	Part #	Description
1	201001	Bolt
2	201002	Rating Disc
3	201003	Rain Cover
4	201004	Upper Housing
5K*	201005K	Valve Housing with Kalrez®
5T*	201005T	Same as the above, with Tef-O-Sil "O" Ring. *(Assembled Unit).
5V*	201005V	Same as the above, with Viton® "O" Ring. (green) *(Assembled Unit).
6	201006TS	Tef-O-Sil "O" Ring
7	201007-1	Stub End - Lower Housing
8	201008	Flanged Lower Housing - 3" TTMA
8A	201009	Teflon® Envelope Flange Gasket
9	201007	Swivel Spud - Lower Housing
9A	201011	Swivel Nut - 3" N.P.T.
9B	3-TR	Teflon® Ring Gasket

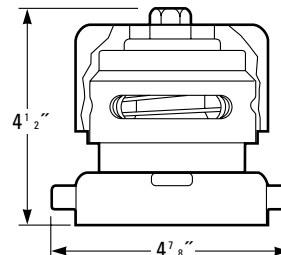
Substitute "X" for T=Teflon®, K=Kalrez®, V= Viton®



3MVB-SX Weight: 4 lbs., 4 ozs.
To conform to the curvature of a dome cover, please specify 18° bias cut. (3 MVB-M)



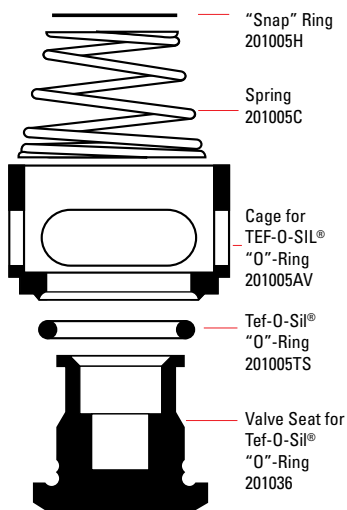
3MVB-FX Weight: 5 lbs., 4 ozs.



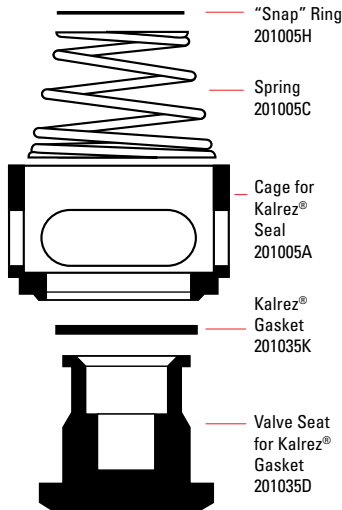
3MVB-TX Weight: 5 lbs., 4 ozs.

Vacuum Breaker Housings

TEF-O-SIL O-RING VALVE SEAT
Assembly Part #201005T



KALREZ® O-RING VALVE SEAT
Assembly Part # 201005K



VITON® O-RING VALVE SEAT
Assembly Part # 201005V

